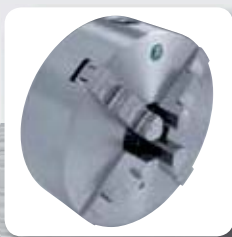


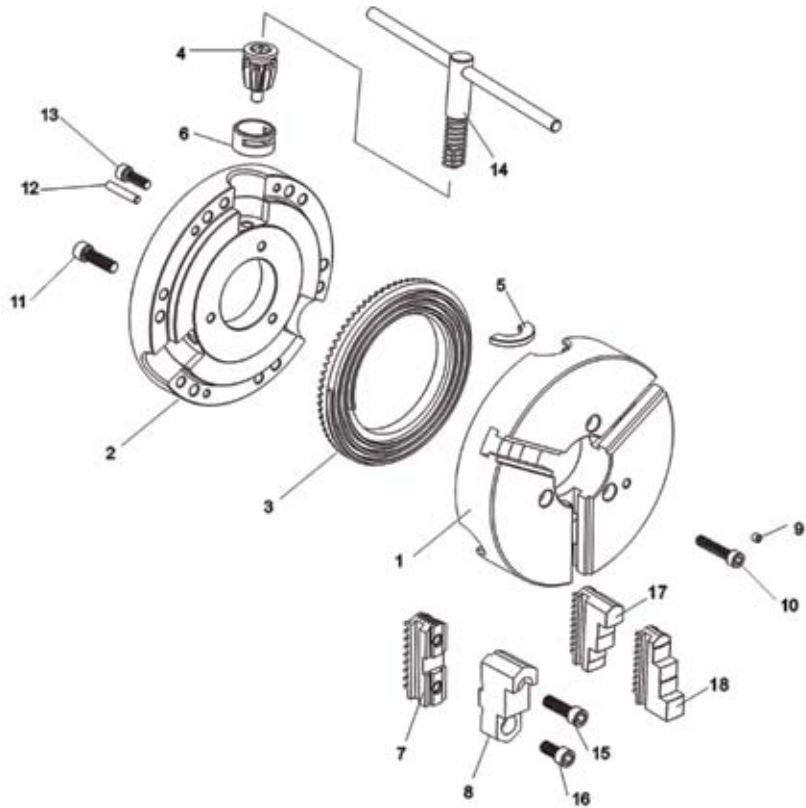
## **LATHE CHUCKS AND ACCESSORIES INDEPENDENT CHUCKS / FLANGE**



PS 3  
PO 3  
PS 4  
PO 4  
DK 11  
DK 12  
K72  
FL  
FLD

## Structure self centering chuck / steel

1. Chuck body
2. Back cover
3. Scroll plate
4. Pinion
5. Pinion half ring
6. Pinion sleeve
7. Hard master jaw
8. Hard top jaw
9. Grease nipple
10. Back cover mounting bolts
11. Chuck mounting bolt
12. Spindle locating pin
13. Back cover mounting bolts
14. Chuck wrench
15. & 16. Hard top jaw mounting bolts
17. Hard solide outside jaws
18. Hard solide inside jaws



### Chuck body

- made of steel, forged, hardened and ground

### Scroll plate

- made of alloy steel, forged and hardened  
- thread flanks ground on both sides

### Pinion

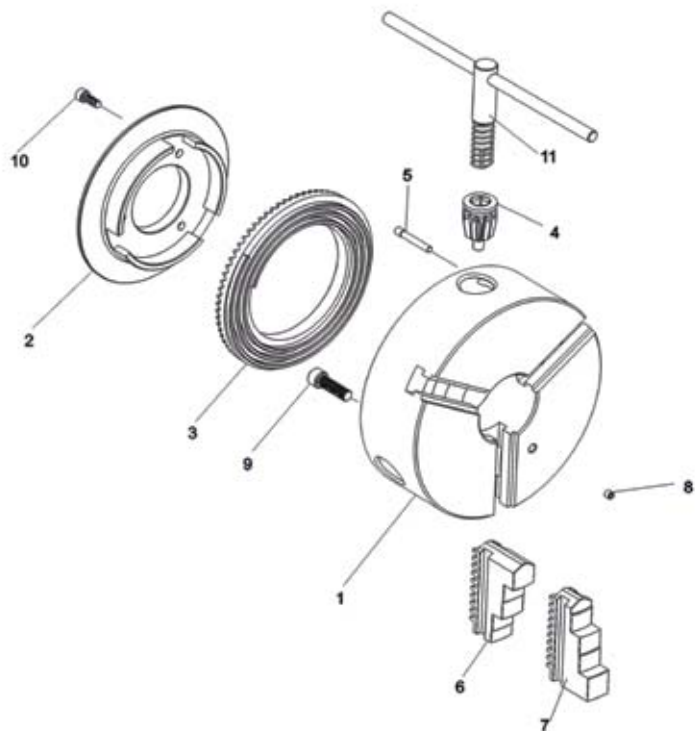
- made of alloy steel, hardened and ground

### Jaws

- out of high-quality alloy steel  
- hardened and ground guiding, gearing and surface

## Structure self centering chuck / cast iron

1. Chuck body
2. Back cover
3. Scroll plate
4. Pinion
5. Pinion half ring
6. Pinion sleeve
7. Bohrbacke
8. Drehbacke
9. Grease nipple
10. Back cover mounting bolts
11. Chuck wrench



### Chuck body

- made of cast iron, ground

### Scroll plate

- made of alloy steel, forged and hardened  
- thread flanks ground on both sides

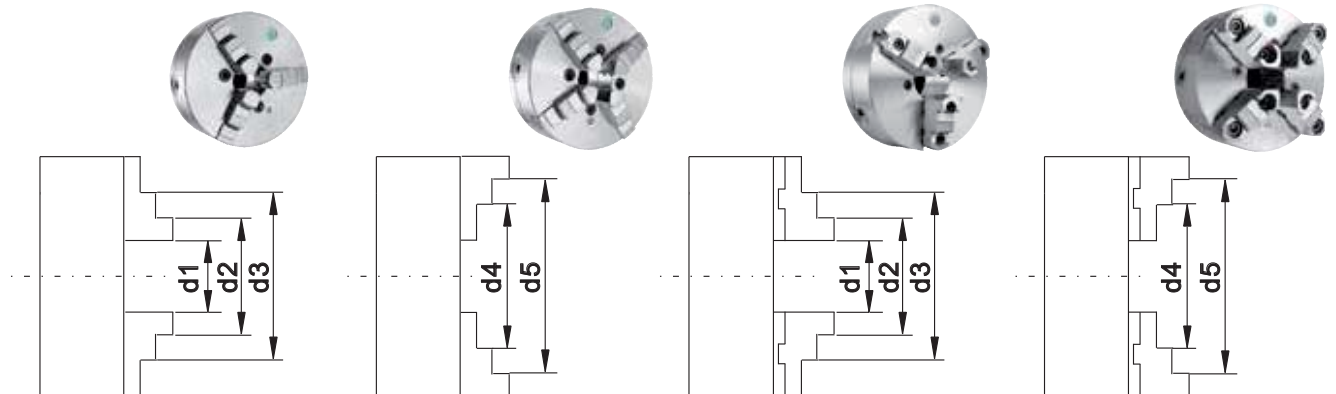
### Pinion

- made of alloy steel, hardened and ground

### Jaws

- made of high-quality alloy steel  
- hardened and ground guiding, gearing and surface

## Clamping range for lathe chucks - PS3 / PS4 / PO3 / PO4 and DK11 / DK12

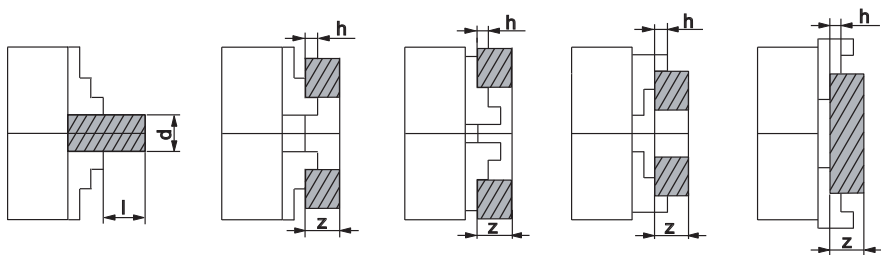


mm

| Chuck size |              | 80    | 100   | 125    | 160     | 200     | 250     | 315     | 400     | 500     | 630     | 800     |
|------------|--------------|-------|-------|--------|---------|---------|---------|---------|---------|---------|---------|---------|
| d1         | solid*       | 2-27  | 3-33  | 3-50   | 3-64    | 4-90    | 5-118   | 10-131  | 10-180  | 20-235  | 30-335  | 150-482 |
| d1         | reversible** | -     | -     | 3-50   | 3-64    | 4-90    | 5-118   | 10-131  | 10-180  | 20-235  | 30-335  | 150-482 |
| d2         | solid        | 22-46 | 25-56 | 34-74  | 42-100  | 52-135  | 62-174  | 78-200  | 85-252  | 120-335 | 160-465 | 282-614 |
| d2         | reversible   | -     | -     | 34-76  | 42-97   | 50-130  | 58-165  | 65-182  | 72-228  | 120-410 | 140-590 | 252-736 |
| d3 max.    | solid        | 45-69 | 56-87 | 72-115 | 94-154  | 120-202 | 145-256 | 172-299 | 210-380 | 245-476 | 325-630 | 448-780 |
| d3 max.    | reversible   | -     | -     | 77-118 | 88-146  | 105-190 | 125-235 | 145-265 | 165-329 | 200-485 | 210-665 | 328-812 |
| d4 max.    | solid        | 25-50 | 32-62 | 39-83  | 50-107  | 60-145  | 77-188  | 90-215  | 103-272 | 140-357 | 180-487 | 302-634 |
| d4 max.    | reversible   | -     | -     | 52-96  | 62-121  | 72-156  | 86-197  | 103-226 | 127-294 | 110-400 | 120-570 | 240-724 |
| d5 max.    | solid        | 48-71 | 62-83 | 80-125 | 98-160  | 130-200 | 160-250 | 190-315 | 230-400 | 276-500 | 345-630 | 468-800 |
| d5 max.    | reversible   | -     | -     | 95-125 | 115-160 | 133-200 | 160-250 | 190-315 | 230-400 | 190-500 | 200-630 | 316-800 |

\* Solid jaws \*\* 2-pieces jaws

## Terms for safe use



1. l, z = Max. workpiece length / width
2. d = Workpiece diameter
3. h = Height of jaw step
4. Workpiece is fixed without any additional clamping components (e.g. rest..)

| Chuck size                           | 80      | 100     | 125     | 160     | 200     | 250     | 315     | 400     | 500     | 630     | 800     |
|--------------------------------------|---------|---------|---------|---------|---------|---------|---------|---------|---------|---------|---------|
| <b>Workpiece dimension</b>           |         |         |         |         |         |         |         |         |         |         |         |
| l                                    | 1,2 x d | 1,2 x d | 1,2 x d | 1,2 x d | 1,2 x d | 1,2 x d | 1,5 x d | 1,5 x d | 1,5 x d | 1,0 x d | 1,0 x d |
| z                                    | 4 x h   | 4 x h   | 4 x h   | 4 x h   | 4 x h   | 4 x h   | 4 x h   | 4 x h   | 4 x h   | 4 x h   | 4 x h   |
| <b>Max. gripping force</b>           |         |         |         |         |         |         |         |         |         |         |         |
| daN                                  | 1000    | 1700    | 2400    | 3100    | 3700    | 4600    | 5500    | 6500    | 7200    | 8000    | 9000    |
| <b>Max. speed (min<sup>-1</sup>)</b> |         |         |         |         |         |         |         |         |         |         |         |
| Chuck cast iron (PS)                 | 4000    | 3500    | 3200    | 3000    | 2500    | 2000    | 1500    | 1000    | 700     | 500     | 300     |
| Chuck steel (PO)                     | 6000    | 5200    | 4800    | 4500    | 4000    | 3500    | 2800    | 2000    | 1200    | 1000    | 450     |
| Chuck cast iron (DK)                 | 4000    | 3500    | 3000    | 2500    | 2000    | 1600    | 1200    | 1000    | 800     | 800     | 300     |
| <b>Unbalance lathe chuck steel</b>   |         |         |         |         |         |         |         |         |         |         |         |
| gcm                                  | 11      | 16      | 23      | 32      | 45      | 63      | 90      | 140     | 300     | 640     | -       |

Centre mount according DIN 6350, cast iron

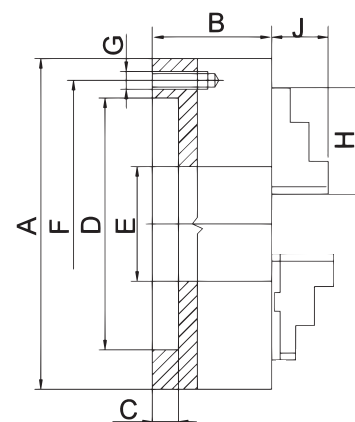


## Execution:

- Standard-3-jaw chuck with high-quality cast iron body
- With centre mount according to DIN 6350
- Inclusive each 1 set hard inside and hard outside solid jaws

## Application:

- Suitable for turning lathe and grinding machines
- For use on machines with increased concentricity



| A - chuck size  | 100      | 125      | 160      | 200      | 250      |
|-----------------|----------|----------|----------|----------|----------|
| B               | 50 mm    | 56 mm    | 64,5 mm  | 75 mm    | 85 mm    |
| C               | 3 mm     | 4 mm     | 4 mm     | 4 mm     | 5 mm     |
| D               | 70 mm    | 95 mm    | 125 mm   | 160 mm   | 200 mm   |
| E               | 20 mm    | 32 mm    | 42 mm    | 55 mm    | 76 mm    |
| F               | 83 mm    | 108 mm   | 140 mm   | 176 mm   | 224 mm   |
| G               | M8       | M8       | M10      | M10      | M12      |
| H               | 42 mm    | 51 mm    | 70 mm    | 85 mm    | 105 mm   |
| J               | 17 mm    | 20 mm    | 32 mm    | 29 mm    | 34 mm    |
| Max. speed      | 3500 rpm | 3200 rpm | 3000 rpm | 2500 rpm | 2000 rpm |
| Weight approx.  | 2,8 kg   | 5 kg     | 10 kg    | 17,5 kg  | 29 kg    |
| Art. no.        | 21-1001F | 21-1002F | 21-1003F | 21-1004F | 21-1005F |
| Price excl. VAT |          |          |          |          |          |

| A- chuck size   | 315      | 400      | 500      | 630      |
|-----------------|----------|----------|----------|----------|
| B               | 94 mm    | 105 mm   | 120 mm   | 135 mm   |
| C               | 5 mm     | 5 mm     | 5 mm     | 7 mm     |
| D               | 260 mm   | 330 mm   | 420 mm   | 545 mm   |
| E               | 103 mm   | 136 mm   | 190 mm   | 252 mm   |
| F               | 286 mm   | 362 mm   | 458 mm   | 586 mm   |
| G               | M16      | M16      | M16      | M16      |
| H               | 125 mm   | 145 mm   | 180 mm   | 225 mm   |
| J               | 43 mm    | 55 mm    | 60 mm    | 70 mm    |
| Max. speed      | 1500 rpm | 1000 rpm | 700 rpm  | 500 rpm  |
| Weight approx.  | 50 kg    | 85 kg    | 145 kg   | 250 kg   |
| Art. no.        | 21-1006F | 21-1007F | 21-1008F | 21-1009F |
| Price excl. VAT |          |          |          |          |

|                      |                                    |                                      |                      |                         |                            |                        |                       |
|----------------------|------------------------------------|--------------------------------------|----------------------|-------------------------|----------------------------|------------------------|-----------------------|
| Standard accessories |                                    |                                      | Optional accessories |                         |                            |                        |                       |
|                      | 1 set hard inside solid jaws U-PS3 | 1 set hard outside solid jaws OJ-PS3 |                      | Hard master jaws MJ-PS3 | Reversible top jaws TJ-PS3 | Soft solid jaws SJ-PS3 | Soft top jaws STJ-PS3 |

Spare parts see page 12-13

According to DIN 55029, cast iron

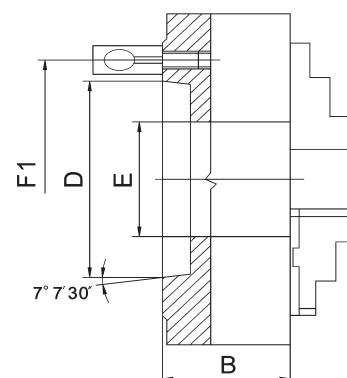


## Execution:

- Standard-3-jaw chuck with high-quality cast iron body
- With Camlock direkt mounting according to DIN 55029
- Inclusive each 1 set hard inside and hard outside solid jaws







## Application:

- Suitable for conventional turning lathes
- For use on machines with increased concentricity



| Chuck size      | 125/D4    | 160/D4    | 160/D5    | 200/D4    | 200/D5    | 200/D6     | 250/D5    | 250/D6     |
|-----------------|-----------|-----------|-----------|-----------|-----------|------------|-----------|------------|
| Diameter        | 125 mm    | 160 mm    | 160 mm    | 200 mm    | 200 mm    | 200 mm     | 250 mm    | 250 mm     |
| Taper           | 4         | 4         | 5         | 4         | 5         | 6          | 5         | 6          |
| B               | 70 mm     | 81,5 mm   | 81,5 mm   | 91 mm     | 91 mm     | 91 mm      | 103,5 mm  | 103,5 mm   |
| D (max.)        | 63,526 mm | 63,526 mm | 82,578 mm | 63,526 mm | 82,578 mm | 106,390 mm | 82,578 mm | 106,390 mm |
| E               | 32 mm     | 42 mm     | 42 mm     | 55 mm     | 55 mm     | 55 mm      | 76 mm     | 76 mm      |
| F1              | 82,6 mm   | 82,6 mm   | 104,8 mm  | 82,6 mm   | 104,8 mm  | 133,4 mm   | 104,8 mm  | 133,4 mm   |
| Camlock stud    | 3         | 3         | 6         | 3         | 6         | 6          | 6         | 6          |
| Max. speed      | 3200 rpm  | 3000 rpm  | 3000 rpm  | 2500 rpm  | 2500 rpm  | 2500 rpm   | 2000 rpm  | 2000 rpm   |
| Weight approx.  | 5 kg      | 9 kg      | 9 kg      | 19 kg     | 19 kg     | 19 kg      | 32 kg     | 32 kg      |
| Art. no.        | 21-1051F  | 21-1052F  | 21-1053F  | 21-1054F  | 21-1054F1 | 21-1055F   | 21-1055F1 | 21-1056F   |
| Price excl. VAT |           |           |           |           |           |            |           |            |

| Chuck size      | 250/D8     | 315/D6     | 315/D8     | 315/D11    | 400/D8     | 400/D11    | 500/D8     | 500/D11    |
|-----------------|------------|------------|------------|------------|------------|------------|------------|------------|
| Diameter        | 250 mm     | 315 mm     | 315 mm     | 315 mm     | 400 mm     | 400 mm     | 500 mm     | 500 mm     |
| Taper           | 8          | 6          | 8          | 11         | 8          | 11         | 8          | 11         |
| B               | 103,5 mm   | 117,7 mm   | 117,7 mm   | 125 mm     | 128,5 mm   | 128,5 mm   | 46 mm      | 146 mm     |
| D (max.)        | 139,734 mm | 106,390 mm | 139,734 mm | 196,887 mm | 139,734 mm | 196,887 mm | 139,734 mm | 196,887 mm |
| E               | 76 mm      | 103 mm     | 103 mm     | 103 mm     | 136 mm     | 136 mm     | 136 mm     | 190 mm     |
| F1              | 171,4 mm   | 133,4 mm   | 171,4 mm   | 235 mm     | 171,4 mm   | 235 mm     | 171,4 mm   | 235 mm     |
| Camlock stud    | 6          | 6          | 6          | 6          | 6          | 6          | 6          | 6          |
| Max. speed      | 2000 rpm   | 1500 rpm   | 1500 rpm   | 1500 rpm   | 1000 rpm   | 1000 rpm   | 700 rpm    | 700 rpm    |
| Weight approx.  | 32 kg      | 51 kg      | 51 kg      | 51 kg      | 101 kg     | 101 kg     | 150 kg     | 150 kg     |
| Art. no.        | 21-1057F   | 21-1057F1  | 21-1058F   | 21-1059F   | 21-1060F   | 21-1061F   | 21-1062F   | 21-1063F   |
| Price excl. VAT |            |            |            |            |            |            |            |            |

|                      |   |   |                      |   |  |   |   |
|----------------------|---|---|----------------------|---|--|---|---|
| Standard accessories |  |  | Optional accessories |  |  |  |  |
|                      | 1 set hard inside solid jaws IJ-PS3   | 1 set hard outside solid jaws OJ-PS3  |                      | Hard master jaws MJ-PS3   | Reversible top jaws TJ-PS3   | Soft solid jaws SJ-PS3  | Soft top jaws STJ-PS3   |

Spare parts see page 12-13

Centre mount according DIN 6350, steel

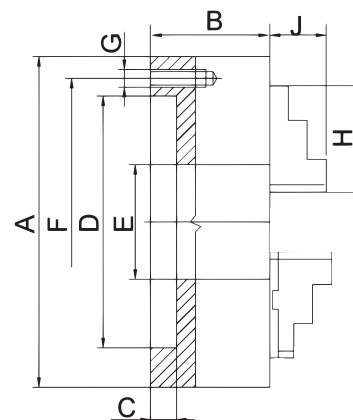


## Execution:

- Precision 3-jaw chuck
- With centre mount according to DIN 6350
- Steel-design for higher speeds and longer life span
- Inclusive each 1 set hard inside and hard outside solid jaws

## Application:

- Suitable for turning lathe and grinding machines
- For use on machines with increased concentricity



| A - chuck size  | 80       | 100      | 125      | 160      | 200      |
|-----------------|----------|----------|----------|----------|----------|
| B               | 44 mm    | 50 mm    | 59,5 mm  | 68 mm    | 78 mm    |
| C               | 3 mm     | 3 mm     | 4 mm     | 4 mm     | 4 mm     |
| D               | 56 mm    | 70 mm    | 95 mm    | 125 mm   | 160 mm   |
| E               | 16 mm    | 20 mm    | 35,5 mm  | 42 mm    | 55 mm    |
| F               | 67 mm    | 83 mm    | 108 mm   | 140 mm   | 176 mm   |
| G               | M6       | M8       | M8       | M10      | M10      |
| H               | 32 mm    | 42 mm    | 51 mm    | 70 mm    | 85 mm    |
| J               | 13 mm    | 17 mm    | 20 mm    | 32 mm    | 29 mm    |
| Max. speed      | 6000 rpm | 5200 rpm | 4800 rpm | 4500 rpm | 4000 rpm |
| Weight approx.  | 1,5 kg   | 2,8 kg   | 5 kg     | 10 kg    | 17,5 kg  |
| Art. no.        | 21-1011F | 21-1012F | 21-1013F | 21-1014F | 21-1015F |
| Price excl. VAT |          |          |          |          |          |

| A - chuck size  | 250      | 315      | 400      | 500       | 630       |
|-----------------|----------|----------|----------|-----------|-----------|
| B               | 89 mm    | 96,2 mm  | 108 mm   | 119 mm    | 129 mm    |
| C               | 5 mm     | 5 mm     | 5 mm     | 5 mm      | 7 mm      |
| D               | 200 mm   | 260 mm   | 330 mm   | 420 mm    | 545 mm    |
| E               | 76 mm    | 103 mm   | 136 mm   | 190 mm    | 252 mm    |
| F               | 224 mm   | 286 mm   | 362 mm   | 458 mm    | 586 mm    |
| G               | M12      | M16      | M16      | M16       | M16       |
| H               | 105 mm   | 125 mm   | 145 mm   | 180 mm    | 225 mm    |
| J               | 34 mm    | 43 mm    | 55 mm    | 60 mm     | 70 mm     |
| Max. speed      | 3500 rpm | 2800 rpm | 2000 rpm | 1200 rpm  | 1000 rpm  |
| Weight approx.  | 29 kg    | 50 kg    | 85 kg    | 145 kg    | 250 kg    |
| Art. no.        | 21-1016F | 21-1017F | 21-1018F | 21-1018F1 | 21-1018F2 |
| Price excl. VAT |          |          |          |           |           |

|                      |                                    |                                      |                      |                         |                            |                        |                       |
|----------------------|------------------------------------|--------------------------------------|----------------------|-------------------------|----------------------------|------------------------|-----------------------|
| Standard accessories |                                    |                                      | Optional accessories |                         |                            |                        |                       |
|                      | 1 set hard inside solid jaws U-PS3 | 1 set hard outside solid jaws OJ-PS3 |                      | Hard master jaws MJ-PS3 | Reversible top jaws TJ-PS3 | Soft solid jaws SJ-PS3 | Soft top jaws STJ-PS3 |

Spare parts see page 12-13



According to DIN 55029, steel

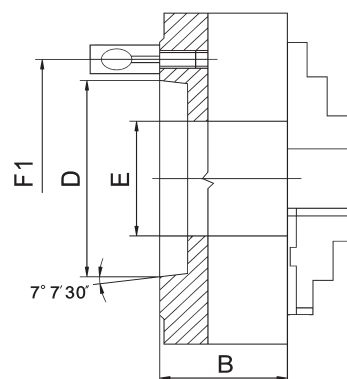


## Execution:

- Precision 3-jaw chuck
- With Camlock direct mount according to DIN 55029
- Steel-design for higher speeds and longer life span
- Inclusive each 1 set hard inside and hard outside solid jaws







## Application:

- Suitable for conventional turning lathes
- For use on machines with increased concentricity



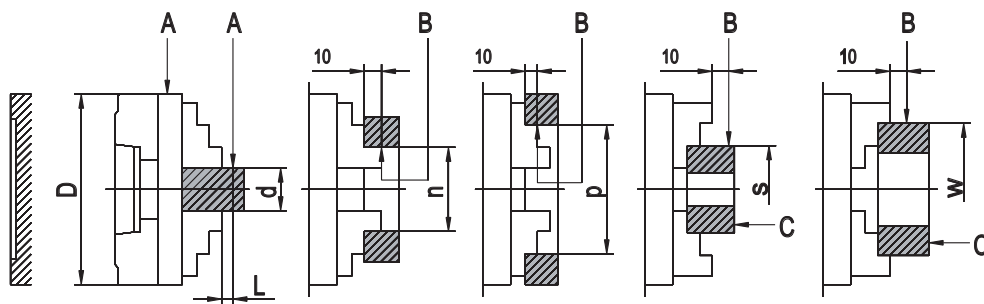
| Chuck size      | 125/D3    | 125/D4    | 160/D4    | 160/D5    | 200/D5    | 200/D6     | 250/D6     | 250/D8     |
|-----------------|-----------|-----------|-----------|-----------|-----------|------------|------------|------------|
| Diameter        | 125 mm    | 125 mm    | 160 mm    | 160 mm    | 200 mm    | 200 mm     | 250 mm     | 250 mm     |
| Taper           | 3         | 4         | 4         | 5         | 5         | 6          | 6          | 8          |
| B               | 59,5 mm   | 59,5 mm   | 68 mm     | 68 mm     | 78 mm     | 78 mm      | 89 mm      | 89 mm      |
| D (max.)        | 53,988 mm | 63,526 mm | 63,526 mm | 82,578 mm | 82,578 mm | 106,390 mm | 106,390 mm | 139,734 mm |
| E               | 32 mm     | 32 mm     | 42 mm     | 42 mm     | 55 mm     | 55 mm      | 76 mm      | 76 mm      |
| F1              | 70,6 mm   | 82,6 mm   | 82,6 mm   | 104,8 mm  | 104,8 mm  | 133,4 mm   | 133,4 mm   | 171,4 mm   |
| Camlock stud    | 3         | 3         | 3         | 6         | 6         | 6          | 6          | 6          |
| Max. speed      | 4800 rpm  | 4800 rpm  | 4500 rpm  | 4500 rpm  | 4000 rpm  | 4000 rpm   | 3500 rpm   | 3500 rpm   |
| Weight approx.  | 5 kg      | 5 kg      | 9 kg      | 9 kg      | 19 kg     | 19 kg      | 32 kg      | 32 kg      |
| Art. no.        | 21-1036F  | 21-1037F  | 21-1039F  | 21-1040F  | 21-1042F  | 21-1043F   | 21-1044F   | 21-1045F   |
| Price excl. VAT |           |           |           |           |           |            |            |            |

| Chuck size      | 315/D6     | 315/D8     | 315/D11    | 400/D8     | 400/D11    | 500/D8     | 500/D11    |
|-----------------|------------|------------|------------|------------|------------|------------|------------|
| Diameter        | 315 mm     | 315 mm     | 315 mm     | 400 mm     | 400 mm     | 500 mm     | 500 mm     |
| Taper           | 6          | 8          | 11         | 8          | 11         | 8          | 11         |
| B               | 96,2 mm    | 96,2 mm    | 117,7 mm   | 108 mm     | 108 mm     | 119 mm     | 119 mm     |
| D (max.)        | 106,390 mm | 139,734 mm | 196,887 mm | 139,734 mm | 196,887 mm | 139,734 mm | 196,887 mm |
| E               | 103 mm     | 103 mm     | 103 mm     | 136 mm     | 136 mm     | 136 mm     | 190 mm     |
| F1              | 133,4 mm   | 171,4 mm   | 235 mm     | 171,4 mm   | 235 mm     | 171,4 mm   | 235 mm     |
| Camlock stud    | 6          | 6          | 6          | 6          | 6          | 6          | 6          |
| Max. speed      | 2800 rpm   | 2800 rpm   | 2800 rpm   | 2000 rpm   | 2000 rpm   | 1200 rpm   | 1200 rpm   |
| Weight approx.  | 51 kg      | 51 kg      | 51 kg      | 101 kg     | 101 kg     | 150 kg     | 150 kg     |
| Art. no.        | 21-1046F   | 21-1047F   | 21-1048F   | 21-1049F   | 21-1050F   | 21-1050F1  | 21-1050F2  |
| Price excl. VAT |            |            |            |            |            |            |            |

|                      |   |   |                      |   |  |   |   |
|----------------------|---|---|----------------------|---|--|---|---|
| Standard accessories |  |  | Optional accessories |  |  |  |  |
|                      | 1 set hard inside solid jaws IJ-PS3   | 1 set hard outside solid jaws OJ-PS3  |                      | Hard master jaws MJ-PS3   | Reversible top jaws TJ-PS3   | Soft solid jaws SJ-PS3  | Soft top jaws STJ-PS3   |

Spare parts see page 12-13

## Concentricity of lathe chucks

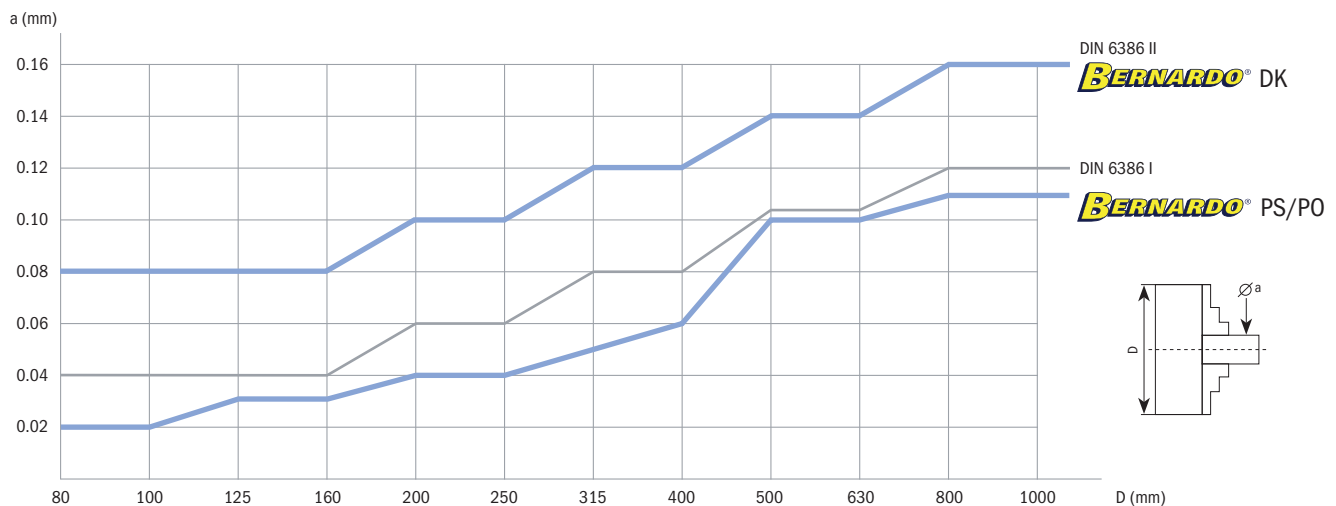


### Take care at measuring:

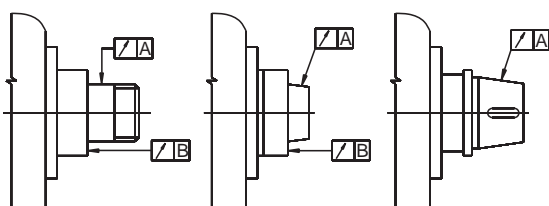
1. The concentricity of the machine spindle (see table below)
2. Correct mounting of the chuck on the spindle nose

- = workpiece
- Maximal inbalance (A, B, C) at jaw openings d1, d2 und d3

| Chuck size              | 80    | 100   | 125  | 160  | 200   | 250   | 315  | 400  | 500  | 630  | 800  |
|-------------------------|-------|-------|------|------|-------|-------|------|------|------|------|------|
| d1                      | 10    | 10    | 18   | 18   | 30    | 30    | 53   | 53   | 75   | 75   | 160  |
| d2                      | -     | 14    | 25   | 30   | 40    | 53    | 75   | 100  | 100  | 125  | 200  |
| d3                      | 14    | 18    | 30   | 40   | 53    | 75    | 100  | 125  | 125  | 160  | 250  |
| L                       | 40    | 40    | 60   | 60   | 80    | 80    | 120  | 120  | 160  | 160  | 160  |
| n                       | 40    | 40    | 50   | 50   | 80    | 80    | 125  | 125  | 200  | 200  | 325  |
| p                       | 60    | 75    | 100  | 135  | 162   | 200   | 252  | 282  | 282  | 325  | 500  |
| s                       | 35    | 50    | 62   | 88   | 96    | 150   | 210  | 250  | 300  | 400  | 400  |
| w                       | 63    | 80    | 100  | 100  | 160   | 160   | 250  | 250  | 400  | 400  | 500  |
| A+B Radial runout PS/PO | 0,02  | 0,02  | 0,03 | 0,03 | 0,04  | 0,04  | 0,05 | 0,06 | 0,10 | 0,10 | 0,11 |
| C Axial runout PS/PO    | 0,015 | 0,015 | 0,02 | 0,02 | 0,025 | 0,025 | 0,03 | 0,03 | 0,05 | 0,05 | 0,06 |
| A+B Radial runout DK    | 0,08  | 0,08  | 0,08 | 0,08 | 0,08  | 0,08  | 0,12 | 0,12 | 0,14 | 0,14 | 0,16 |
| C Axial runout DK       | 0,03  | 0,03  | 0,03 | 0,03 | 0,03  | 0,03  | 0,04 | 0,04 | 0,05 | 0,05 | 0,06 |



## Requirements for compliance the above mentioned concentricity



- I. Correct mounting of the lathe chuck on the spindle nose
- II. The concentricity of the spindle nose must be in accordance to the right data

|        | Diameter | Concentricity |
|--------|----------|---------------|
| PO     | 80-400   | 0,003         |
|        | 500-630  | 0,005         |
| PS, DK | 80-160   | 0,003         |
|        | 200-800  | 0,005         |



Centre mount according to DIN 6350, cast iron

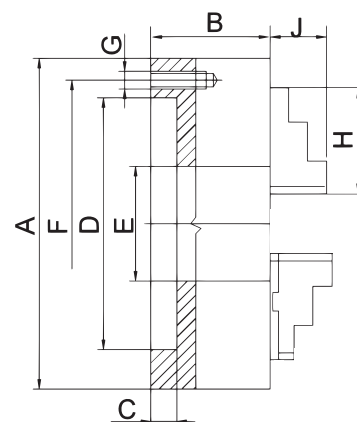


## Execution:

- Standard 4-jaw chuck with high-quality cast iron body
- With centre mount according to DIN 6350
- Inclusive each 1 set hard inside and hard outside solid jaws

## Application:

- Useable for turning lathe and grinding machines as well as milling devices
- For clamping of rectangular and round workpieces
- For using at machines with high concentricity



| A - chuck size  | 100      | 125      | 160      | 200      | 250      |
|-----------------|----------|----------|----------|----------|----------|
| B               | 50 mm    | 56 mm    | 64,5 mm  | 75 mm    | 85 mm    |
| C               | 3 mm     | 4 mm     | 4 mm     | 4 mm     | 5 mm     |
| D               | 70 mm    | 95 mm    | 125 mm   | 160 mm   | 200 mm   |
| E               | 20 mm    | 32 mm    | 42 mm    | 55 mm    | 76 mm    |
| F               | 83 mm    | 108 mm   | 140 mm   | 176 mm   | 224 mm   |
| G               | M8       | M8       | M10      | M10      | M12      |
| H               | 42 mm    | 51 mm    | 70 mm    | 85 mm    | 105 mm   |
| J               | 17 mm    | 20 mm    | 32 mm    | 29 mm    | 34 mm    |
| Max. speed      | 3500 rpm | 3200 rpm | 3000 rpm | 2500 rpm | 2000 rpm |
| Weight approx.  | 2,8 kg   | 5 kg     | 10 kg    | 17,5 kg  | 29 kg    |
| Art. no.        | 21-1999F | 21-2000F | 21-2001F | 21-2002F | 21-2003F |
| Price excl. VAT |          |          |          |          |          |

| A - chuck size  | 315      | 400      | 500      | 630      |
|-----------------|----------|----------|----------|----------|
| B               | 94 mm    | 105 mm   | 120 mm   | 135 mm   |
| C               | 5 mm     | 5 mm     | 5 mm     | 7 mm     |
| D               | 260 mm   | 330 mm   | 420 mm   | 545 mm   |
| E               | 103 mm   | 136 mm   | 190 mm   | 252 mm   |
| F               | 286 mm   | 362 mm   | 458 mm   | 586 mm   |
| G               | M16      | M16      | M16      | M16      |
| H               | 125 mm   | 145 mm   | 180 mm   | 225 mm   |
| J               | 43 mm    | 55 mm    | 60 mm    | 70 mm    |
| Max. speed      | 1500 rpm | 1000 rpm | 700 rpm  | 500 rpm  |
| Weight approx.  | 50 kg    | 85 kg    | 145 kg   | 250 kg   |
| Art. no.        | 21-2004F | 21-2005F | 21-2006F | 21-2007F |
| Price excl. VAT |          |          |          |          |

|                      |                                     |                                      |                      |                         |                            |                        |                       |
|----------------------|-------------------------------------|--------------------------------------|----------------------|-------------------------|----------------------------|------------------------|-----------------------|
| Standard accessories |                                     |                                      | Optional accessories |                         |                            |                        |                       |
|                      | 1 set hard inside solid jaws IJ-PS4 | 1 set hard outside solid jaws OJ-PS4 |                      | Hard master jaws MJ-PS4 | Reversible top jaws TJ-PS4 | Soft solid jaws SJ-PS4 | Soft top jaws STJ-PS4 |

Spare parts see page 12-13

Centre mount according to DIN 6350, steel

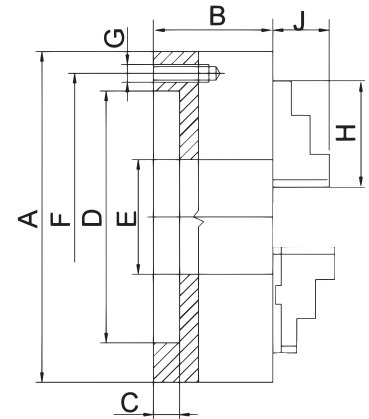


## Execution:

- Precision 4-jaw chuck
- With centre mount according to DIN 6350
- Steel design for higher speed and longer life span
- Inclusive each 1 set hard inside and hard outside solid jaws

## Application:

- Suitable for turning lathe and grinding machines
- For using on machines with increased concentricity



| A - chuck size  | 125      | 160      | 200      | 250      |
|-----------------|----------|----------|----------|----------|
| B               | 59,5 mm  | 68 mm    | 78 mm    | 89 mm    |
| C               | 4 mm     | 4 mm     | 4 mm     | 5 mm     |
| D               | 95 mm    | 125 mm   | 160 mm   | 200 mm   |
| E               | 35,5 mm  | 42 mm    | 55 mm    | 76 mm    |
| F               | 108 mm   | 140 mm   | 176 mm   | 224 mm   |
| G               | M8       | M10      | M10      | M12      |
| H               | 51 mm    | 70 mm    | 85 mm    | 105 mm   |
| J               | 20 mm    | 32 mm    | 29 mm    | 34 mm    |
| Max. speed      | 4800 rpm | 4500 rpm | 4000 rpm | 3500 rpm |
| Weight approx.  | 5 kg     | 10 kg    | 17,5 kg  | 29 kg    |
| Art. no.        | 21-2009F | 21-2010F | 21-2011F | 21-2012F |
| Price excl. VAT |          |          |          |          |

| A - chuck size  | 315      | 400      | 500       | 630       |
|-----------------|----------|----------|-----------|-----------|
| B               | 96,2 mm  | 108 mm   | 119 mm    | 129 mm    |
| C               | 5 mm     | 5 mm     | 5 mm      | 7 mm      |
| D               | 260 mm   | 330 mm   | 420 mm    | 545 mm    |
| E               | 103 mm   | 136 mm   | 190 mm    | 252 mm    |
| F               | 286 mm   | 362 mm   | 458 mm    | 586 mm    |
| G               | M16      | M16      | M16       | M16       |
| H               | 125 mm   | 145 mm   | 180 mm    | 225 mm    |
| J               | 43 mm    | 55 mm    | 60 mm     | 70 mm     |
| Max. speed      | 2800 rpm | 2000 rpm | 1200 rpm  | 1000 rpm  |
| Weight approx.  | 50 kg    | 85 kg    | 145 kg    | 250 kg    |
| Art. no.        | 21-2013F | 21-2014F | 21-2014F1 | 21-2014F2 |
| Price excl. VAT |          |          |           |           |

|                      |                                    |                                      |                      |                         |                            |                        |                       |
|----------------------|------------------------------------|--------------------------------------|----------------------|-------------------------|----------------------------|------------------------|-----------------------|
| Standard accessories |                                    |                                      | Optional accessories |                         |                            |                        |                       |
|                      | 1 set hard inside solid jaws U-PS4 | 1 set hard outside solid jaws OJ-PS4 |                      | Hard master jaws MJ-PS4 | Reversible top jaws TJ-PS4 | Soft solid jaws SJ-PS4 | Soft top jaws STJ-PS4 |

Spare parts see page 12-13

According to DIN 55029, steel

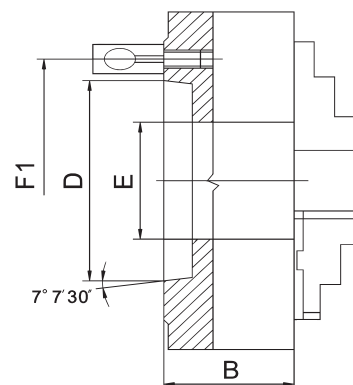


## Execution:

- Precision 4-jaw chuck
- With Camlock direct mount according to DIN 55029
- Steel-design for higher speeds and longer life span
- Inclusive each 1 set hard inside and hard outside solid jaws

## Application:

- Useable for conventional turning lathes
- For clamping of rectangular and round workpieces
- For using at machines with higher concentricity



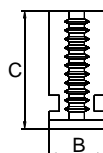
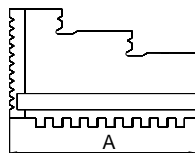
| Chuck size      | 160/D4    | 160/D5    | 200/D5    | 200/D6     | 250/D6     | 250/D8     |
|-----------------|-----------|-----------|-----------|------------|------------|------------|
| Diameter        | 160 mm    | 160 mm    | 200 mm    | 200 mm     | 250 mm     | 250 mm     |
| Taper           | 4         | 5         | 5         | 6          | 6          | 8          |
| B               | 68 mm     | 68 mm     | 78 mm     | 78 mm      | 89 mm      | 89 mm      |
| D (max.)        | 63,526 mm | 82,578 mm | 82,578 mm | 106,390 mm | 106,390 mm | 139,734 mm |
| E               | 42 mm     | 42 mm     | 55 mm     | 55 mm      | 76 mm      | 76 mm      |
| F1              | 82,6 mm   | 104,8 mm  | 104,8 mm  | 133,4 mm   | 133,4 mm   | 171,4 mm   |
| Camlock studs   | 3         | 6         | 6         | 6          | 6          | 6          |
| Max. speed      | 4500 rpm  | 4500 rpm  | 4000 rpm  | 4000 rpm   | 3500 rpm   | 3500 rpm   |
| Weight approx.  | 9 kg      | 9 kg      | 19 kg     | 19 kg      | 32 kg      | 32 kg      |
| Art. no.        | 21-2035F  | 21-2036F  | 21-2037F  | 21-2038F   | 21-2039F   | 21-2040F   |
| Price excl. VAT |           |           |           |            |            |            |

| Chuck size      | 315/D6     | 315/D8     | 315/D11    | 400/D6     | 400/D8     | 400/D11    |
|-----------------|------------|------------|------------|------------|------------|------------|
| Diameter        | 315 mm     | 315 mm     | 315 mm     | 400 mm     | 400 mm     | 400 mm     |
| Taper           | 6          | 8          | 11         | 6          | 8          | 11         |
| B               | 96,2 mm    | 96,2 mm    | 117,7 mm   | 108 mm     | 108 mm     | 108 mm     |
| D (max.)        | 106,390 mm | 139,734 mm | 196,887 mm | 106,390 mm | 139,734 mm | 196,887 mm |
| E               | 103 mm     | 103 mm     | 103 mm     | 103 mm     | 136 mm     | 136 mm     |
| F1              | 133,4 mm   | 171,4 mm   | 235 mm     | 133,4 mm   | 171,4 mm   | 235 mm     |
| Camlock studs   | 6          | 6          | 6          | 6          | 6          | 6          |
| Max. speed      | 2800 rpm   | 2800 rpm   | 2800 rpm   | 2000 rpm   | 2000 rpm   | 2000 rpm   |
| Weight approx.  | 51 kg      | 51 kg      | 51 kg      | 101 kg     | 101 kg     | 101 kg     |
| Art. no.        | 21-2041F   | 21-2042F   | 21-2043F   | 21-2044F   | 21-2045F   | 21-2046F   |
| Price excl. VAT |            |            |            |            |            |            |

|                      |                                     |                                      |                      |                         |                            |                        |                       |
|----------------------|-------------------------------------|--------------------------------------|----------------------|-------------------------|----------------------------|------------------------|-----------------------|
| Standard accessories |                                     |                                      | Optional accessories |                         |                            |                        |                       |
|                      | 1 set hard inside solid jaws IJ-PS4 | 1 set hard outside solid jaws OJ-PS4 |                      | Hard master jaws MJ-PS4 | Reversible top jaws TJ-PS4 | Soft solid jaws SJ-PS4 | Soft top jaws STJ-PS4 |

Spare parts see page 12-13

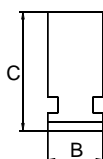
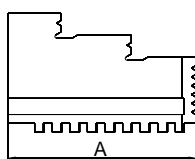
## Hard outside solid jaws OJ-PS3 and OJ-PS4



| Art. no. | Description                        | A   | B  | C  | excl. VAT |
|----------|------------------------------------|-----|----|----|-----------|
| mm       |                                    |     |    |    |           |
| 21-3360  | Hard outside solid jaws OJ-PS3-80  | 32  | 11 | 28 | €         |
| 21-3361  | Hard outside solid jaws OJ-PS3-100 | 42  | 15 | 32 | €         |
| 21-3362  | Hard outside solid jaws OJ-PS3-125 | 51  | 20 | 40 | €         |
| 21-3363  | Hard outside solid jaws OJ-PS3-160 | 70  | 20 | 53 | €         |
| 21-3364  | Hard outside solid jaws OJ-PS3-200 | 85  | 25 | 54 | €         |
| 21-3365  | Hard outside solid jaws OJ-PS3-250 | 105 | 28 | 63 | €         |

| Art. no. | Description                        | A   | B  | C   | excl. VAT |
|----------|------------------------------------|-----|----|-----|-----------|
| mm       |                                    |     |    |     |           |
| 21-3366  | Hard outside solid jaws OJ-PS3-315 | 125 | 32 | 73  | €         |
| 21-3367  | Hard outside solid jaws OJ-PS3-400 | 145 | 36 | 92  | €         |
| 21-3368  | Hard outside solid jaws OJ-PS3-500 | 180 | 40 | 100 | €         |
| 21-3369  | Hard outside solid jaws OJ-PS3-630 | 225 | 50 | 110 | €         |
| 21-3380  | Hard outside solid jaws OJ-PS4-125 | 51  | 20 | 40  | €         |
| 21-3381  | Hard outside solid jaws OJ-PS4-160 | 70  | 20 | 53  | €         |
| 21-3382  | Hard outside solid jaws OJ-PS4-200 | 85  | 25 | 54  | €         |
| 21-3383  | Hard outside solid jaws OJ-PS4-250 | 105 | 28 | 63  | €         |
| 21-3384  | Hard outside solid jaws OJ-PS4-315 | 125 | 32 | 73  | €         |
| 21-3385  | Hard outside solid jaws OJ-PS4-400 | 145 | 36 | 92  | €         |
| 21-3386  | Hard outside solid jaws OJ-PS4-500 | 180 | 40 | 100 | €         |
| 21-3387  | Hard outside solid jaws OJ-PS4-630 | 225 | 50 | 110 | €         |

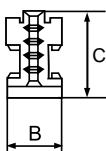
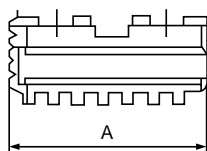
## Hard inside solid jaws IJ-PS3 and IJ-PS4



|         |                                   |     |    |    |   |
|---------|-----------------------------------|-----|----|----|---|
| 21-3400 | Hard inside solid jaws IJ-PS3-80  | 32  | 11 | 28 | € |
| 21-3401 | Hard inside solid jaws IJ-PS3-100 | 42  | 15 | 32 | € |
| 21-3402 | Hard inside solid jaws IJ-PS3-125 | 51  | 20 | 40 | € |
| 21-3403 | Hard inside solid jaws IJ-PS3-160 | 70  | 20 | 53 | € |
| 21-3404 | Hard inside solid jaws IJ-PS3-200 | 85  | 25 | 54 | € |
| 21-3405 | Hard inside solid jaws IJ-PS3-250 | 105 | 28 | 63 | € |
| 21-3406 | Hard inside solid jaws IJ-PS3-315 | 125 | 32 | 73 | € |

|         |                                   |     |    |     |   |
|---------|-----------------------------------|-----|----|-----|---|
| 21-3407 | Hard inside solid jaws IJ-PS3-400 | 145 | 36 | 92  | € |
| 21-3408 | Hard inside solid jaws IJ-PS3-500 | 180 | 40 | 100 | € |
| 21-3409 | Hard inside solid jaws IJ-PS3-630 | 225 | 50 | 110 | € |
| 21-3420 | Hard inside solid jaws IJ-PS4-125 | 51  | 20 | 40  | € |
| 21-3421 | Hard inside solid jaws IJ-PS4-160 | 70  | 20 | 53  | € |
| 21-3422 | Hard inside solid jaws IJ-PS4-200 | 85  | 25 | 54  | € |
| 21-3423 | Hard inside solid jaws IJ-PS4-250 | 105 | 28 | 63  | € |
| 21-3424 | Hard inside solid jaws IJ-PS4-315 | 125 | 32 | 73  | € |
| 21-3425 | Hard inside solid jaws IJ-PS4-400 | 145 | 36 | 92  | € |
| 21-3426 | Hard inside solid jaws IJ-PS4-500 | 180 | 40 | 100 | € |
| 21-3427 | Hard inside solid jaws IJ-PS4-630 | 225 | 50 | 110 | € |

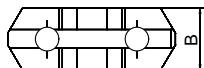
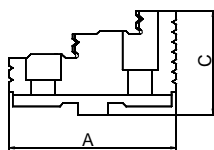
## Hard master jaws MJ-PS3 and MJ-PS4



|         |                             |     |    |    |   |
|---------|-----------------------------|-----|----|----|---|
| 21-3280 | Hard master jaws MJ-PS3-125 | 54  | 20 | 28 | € |
| 21-3281 | Hard master jaws MJ-PS3-160 | 65  | 20 | 29 | € |
| 21-3282 | Hard master jaws MJ-PS3-200 | 79  | 25 | 33 | € |
| 21-3283 | Hard master jaws MJ-PS3-250 | 92  | 28 | 36 | € |
| 21-3284 | Hard master jaws MJ-PS3-315 | 110 | 32 | 40 | € |
| 21-3285 | Hard master jaws MJ-PS3-400 | 130 | 36 | 49 | € |

|         |                             |     |    |      |   |
|---------|-----------------------------|-----|----|------|---|
| 21-3286 | Hard master jaws MJ-PS3-500 | 166 | 40 | 54   | € |
| 21-3287 | Hard master jaws MJ-PS3-630 | 210 | 50 | 54,5 | € |
| 21-3300 | Hard master jaws MJ-PS4-125 | 54  | 20 | 28   | € |
| 21-3301 | Hard master jaws MJ-PS4-160 | 65  | 20 | 29   | € |
| 21-3302 | Hard master jaws MJ-PS4-200 | 79  | 25 | 33   | € |
| 21-3303 | Hard master jaws MJ-PS4-250 | 92  | 28 | 36   | € |
| 21-3304 | Hard master jaws MJ-PS4-315 | 110 | 32 | 40   | € |
| 21-3305 | Hard master jaws MJ-PS4-400 | 130 | 36 | 49   | € |
| 21-3306 | Hard master jaws MJ-PS4-500 | 166 | 40 | 54   | € |
| 21-3307 | Hard master jaws MJ-PS4-630 | 210 | 50 | 54,5 | € |

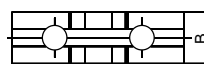
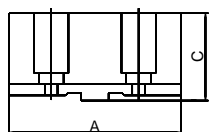
## Reversible top jaws TJ-PS3 and TJ-PS4



| Art. no. | Description                    | A   | B    | C    | excl. VAT |
|----------|--------------------------------|-----|------|------|-----------|
|          |                                | mm  |      |      |           |
| 21-3320  | Reversible top jaws TJ-PS3-125 | 56  | 22   | 38,5 | €         |
| 21-3321  | Reversible top jaws TJ-PS3-160 | 67  | 25   | 41,5 | €         |
| 21-3322  | Reversible top jaws TJ-PS3-200 | 80  | 27   | 43,5 | €         |
| 21-3323  | Reversible top jaws TJ-PS3-250 | 95  | 32,5 | 51,5 | €         |
| 21-3324  | Reversible top jaws TJ-PS3-315 | 110 | 37   | 55   | €         |
| 21-3325  | Reversible top jaws TJ-PS3-400 | 127 | 42   | 64,5 | €         |

| Art. no. | Description                    | A   | B    | C    | excl. VAT |
|----------|--------------------------------|-----|------|------|-----------|
|          |                                | mm  |      |      |           |
| 21-3326  | Reversible top jaws TJ-PS3-500 | 127 | 50   | 74,5 | €         |
| 21-3327  | Reversible top jaws TJ-PS3-630 | 127 | 52   | 82   | €         |
| 21-3340  | Reversible top jaws TJ-PS4-125 | 56  | 22   | 38,5 | €         |
| 21-3341  | Reversible top jaws TJ-PS4-160 | 67  | 25   | 41,5 | €         |
| 21-3342  | Reversible top jaws TJ-PS4-200 | 80  | 27   | 43,5 | €         |
| 21-3343  | Reversible top jaws TJ-PS4-250 | 95  | 32,5 | 51,5 | €         |
| 21-3344  | Reversible top jaws TJ-PS4-315 | 110 | 37   | 55   | €         |
| 21-3345  | Reversible top jaws TJ-PS4-400 | 127 | 42   | 64,5 | €         |
| 21-3346  | Reversible top jaws TJ-PS4-500 | 127 | 50   | 74,5 | €         |
| 21-3347  | Reversible top jaws TJ-PS4-630 | 127 | 52   | 82   | €         |

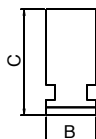
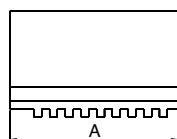
## Soft top jaws STJ-PS3 and STJ-PS4



|         |                           |     |      |      |   |
|---------|---------------------------|-----|------|------|---|
| 21-3240 | Soft top jaws STJ-PS3-125 | 64  | 22   | 38,5 | € |
| 21-3241 | Soft top jaws STJ-PS3-160 | 78  | 25   | 41,5 | € |
| 21-3242 | Soft top jaws STJ-PS3-200 | 90  | 27   | 43,5 | € |
| 21-3243 | Soft top jaws STJ-PS3-250 | 106 | 32,5 | 51,5 | € |
| 21-3244 | Soft top jaws STJ-PS3-315 | 120 | 37   | 55   | € |
| 21-3245 | Soft top jaws STJ-PS3-400 | 140 | 42   | 64,5 | € |

|         |                           |     |      |      |   |
|---------|---------------------------|-----|------|------|---|
| 21-3246 | Soft top jaws STJ-PS3-500 | 140 | 42   | 74,5 | € |
| 21-3247 | Soft top jaws STJ-PS3-630 | 160 | 52   | 82   | € |
| 21-3260 | Soft top jaws STJ-PS4-125 | 64  | 22   | 38,5 | € |
| 21-3261 | Soft top jaws STJ-PS4-160 | 78  | 25   | 41,5 | € |
| 21-3262 | Soft top jaws STJ-PS4-200 | 90  | 27   | 43,5 | € |
| 21-3263 | Soft top jaws STJ-PS4-250 | 106 | 32,5 | 51,5 | € |
| 21-3264 | Soft top jaws STJ-PS4-315 | 120 | 37   | 55   | € |
| 21-3265 | Soft top jaws STJ-PS4-400 | 140 | 42   | 64,5 | € |
| 21-3266 | Soft top jaws STJ-PS4-500 | 140 | 42   | 74,5 | € |
| 21-3267 | Soft top jaws STJ-PS4-630 | 160 | 52   | 82   | € |

## Soft solid jaws SJ-PS3 and SJ-PS4



|         |                            |     |    |    |   |
|---------|----------------------------|-----|----|----|---|
| 21-3200 | Soft solid jaws SJ-PS3-80  | 32  | 11 | 28 | € |
| 21-3201 | Soft solid jaws SJ-PS3-100 | 42  | 15 | 32 | € |
| 21-3202 | Soft solid jaws SJ-PS3-125 | 51  | 20 | 40 | € |
| 21-3203 | Soft solid jaws SJ-PS3-160 | 70  | 20 | 53 | € |
| 21-3204 | Soft solid jaws SJ-PS3-200 | 85  | 25 | 54 | € |
| 21-3205 | Soft solid jaws SJ-PS3-250 | 105 | 28 | 63 | € |
| 21-3206 | Soft solid jaws SJ-PS3-315 | 125 | 32 | 73 | € |

|         |                            |     |    |     |   |
|---------|----------------------------|-----|----|-----|---|
| 21-3207 | Soft solid jaws SJ-PS3-400 | 145 | 36 | 92  | € |
| 21-3208 | Soft solid jaws SJ-PS3-500 | 180 | 40 | 100 | € |
| 21-3209 | Soft solid jaws SJ-PS3-630 | 225 | 50 | 110 | € |
| 21-3220 | Soft solid jaws SJ-PS4-125 | 51  | 20 | 40  | € |
| 21-3221 | Soft solid jaws SJ-PS4-160 | 70  | 20 | 53  | € |
| 21-3222 | Soft solid jaws SJ-PS4-200 | 85  | 25 | 54  | € |
| 21-3223 | Soft solid jaws SJ-PS4-250 | 105 | 28 | 63  | € |
| 21-3224 | Soft solid jaws SJ-PS4-315 | 125 | 32 | 73  | € |
| 21-3225 | Soft solid jaws SJ-PS4-400 | 145 | 36 | 92  | € |
| 21-3226 | Soft solid jaws SJ-PS4-500 | 180 | 40 | 100 | € |
| 21-3227 | Soft solid jaws SJ-PS4-630 | 225 | 50 | 110 | € |

Centre mount according to DIN 6350, cast iron

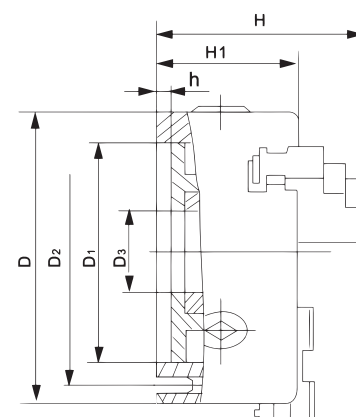


## Execution:

- Standard 3-jaw chuck with high-quality cast iron body
- with centre mount according to DIN 6350
- Inclusive each 1 set hard inside and hard outside solid jaws

## Application:

- Useable for turning lathes and drilling devices



| D - chuck size  | 80       | 100      | 125      | 160      | 200      |
|-----------------|----------|----------|----------|----------|----------|
| D1              | 56 mm    | 70 mm    | 95 mm    | 125 mm   | 160 mm   |
| D2              | 67 mm    | 83 mm    | 108 mm   | 140 mm   | 176 mm   |
| D3              | 16 mm    | 22 mm    | 30 mm    | 45 mm    | 65 mm    |
| H               | 66,5 mm  | 74,5 mm  | 84,5 mm  | 94 mm    | 109 mm   |
| H1              | 50 mm    | 55 mm    | 58 mm    | 65 mm    | 75 mm    |
| h               | 4 mm     | 3 mm     | 4 mm     | 5 mm     | 5 mm     |
| Mounting bolts  | 3 x M6   | 3 x M8   | 3 x M8   | 6 x M10  | 6 x M10  |
| Max. speed      | 4000 rpm | 3500 rpm | 3000 rpm | 2500 rpm | 2000 rpm |
| Weight ca.      | 1,9 kg   | 3,2 kg   | 5 kg     | 8,8 kg   | 15,7 kg  |
| Art. no.        | 21-0750  | 21-0751  | 21-0752  | 21-0753  | 21-0754  |
| Price excl. VAT |          |          |          |          |          |

| D - chuck size  | 250      | 315      | 400      | 500     | 630      |
|-----------------|----------|----------|----------|---------|----------|
| D1              | 200 mm   | 260 mm   | 330 mm   | 420 mm  | 545 mm   |
| D2              | 224 mm   | 286 mm   | 362 mm   | 458 mm  | 586 mm   |
| D3              | 80 mm    | 100 mm   | 130 mm   | 210 mm  | 260 mm   |
| H               | 120 mm   | 156,5 mm | 173,5 mm | 205 mm  | 220,5 mm |
| H1              | 80 mm    | 90 mm    | 100 mm   | 115 mm  | 135 mm   |
| h               | 5 mm     | 6 mm     | 6 mm     | 6 mm    | 7 mm     |
| Mounting bolts  | 6 x M12  | 6 x M16  | 6 x M16  | 6 x M16 | 6 x M16  |
| Max. speed      | 1600 rpm | 1200 rpm | 1000 rpm | 800 rpm | 800 rpm  |
| Weight ca.      | 26,5 kg  | 47 kg    | 73 kg    | 128 kg  | 230 kg   |
| Art. no.        | 21-0755  | 21-0756  | 21-0757  | 21-0758 | 21-0759  |
| Price excl. VAT |          |          |          |         |          |

|                      |                                      |  |                      |                           |                              |                          |                         |
|----------------------|--------------------------------------|--|----------------------|---------------------------|------------------------------|--------------------------|-------------------------|
| Standard accessories |                                      |  | Optional accessories |                           |                              |                          |                         |
|                      | 1 set hard inside solid jaws DU-DK11 | 1 set hard outside solid jaws DOJ-DK11 |                      | Hard master jaws DMJ-DK11 | Reversible top jaws DTJ-DK11 | Soft solid jaws DSJ-DK11 | Soft top jaws DSTJ-DK11 |

Spare parts see page 18-19



According to DIN 55029, cast iron

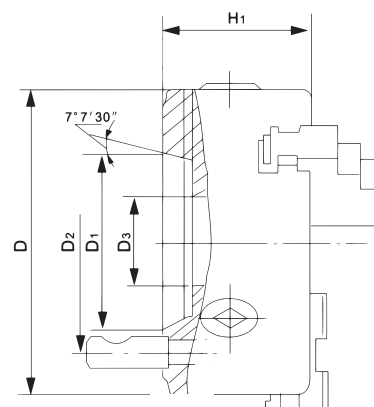


## Execution:

- Standard 3-jaw chuck with high-quality cast iron body
- With Camlock direct mount according to DIN 55029
- Inclusive each 1 set hard inside and hard outside solid jaws

## Application:

- Suitable for conventional turning lathes



| Chuck size      | 125/D3   | 125/D4    | 160/D4    | 160/D5    | 200/D5   | 200/D6     |
|-----------------|----------|-----------|-----------|-----------|----------|------------|
| D - diameter    | 125 mm   | 125 mm    | 160 mm    | 160 mm    | 200 mm   | 250 mm     |
| Taper           | 3        | 4         | 4         | 5         | 5        | 6          |
| D1 (max.)       | 53,988   | 63,526 mm | 63,526 mm | 82,578 mm | 82,578   | 106,390 mm |
| D2              | 70,6 mm  | 82,6 mm   | 82,6 mm   | 104,8 mm  | 104,8 mm | 133,4 mm   |
| D3              | 30 mm    | 30 mm     | 40 mm     | 40 mm     | 60 mm    | 60 mm      |
| H1              | 63 mm    | 63 mm     | 74 mm     | 74 mm     | 90 mm    | 90 mm      |
| Max. speed      | 3000 rpm | 3000 rpm  | 2500 rpm  | 2500 rpm  | 2000 rpm | 2000 rpm   |
| Weight approx.  | 5 kg     | 5 kg      | 9 kg      | 9 kg      | 19 kg    | 19 kg      |
| Art. no.        | 21-0780  | 21-0781   | 21-0782   | 21-0783   | 21-0784  | 21-0785    |
| Price excl. VAT |          |           |           |           |          |            |

| Chuck size      | 250/D6     | 250/D8     | 315/D6     | 315/D8     | 315/D11    | 400/D8     | 400/D11    |
|-----------------|------------|------------|------------|------------|------------|------------|------------|
| D - diameter    | 250 mm     | 250 mm     | 315 mm     | 315 mm     | 315 mm     | 400 mm     | 400 mm     |
| Taper           | 6          | 8          | 6          | 8          | 11         | 8          | 11         |
| D1 (max.)       | 106,390 mm | 139,734 mm | 106,390 mm | 139,734 mm | 196,887 mm | 139,734 mm | 196,887 mm |
| D2              | 133,4 mm   | 171,4 mm   | 133,4 mm   | 171,4 mm   | 235 mm     | 171,4 mm   | 235 mm     |
| D3              | 70 mm      | 80 mm      | 100 mm     | 100 mm     | 100 mm     | 130 mm     | 130 mm     |
| H1              | 96,5 mm    | 96,5 mm    | 113 mm     | 113 mm     | 115 mm     | 126 mm     | 126 mm     |
| Max. speed      | 1600 rpm   | 1600 rpm   | 1200 rpm   | 1200 rpm   | 1200 rpm   | 1000 rpm   | 1000 rpm   |
| Weight approx.  | 32 kg      | 32 kg      | 51 kg      | 51 kg      | 51 kg      | 101 kg     | 101 kg     |
| Art. no.        | 21-0786    | 21-0787    | 21-0788    | 21-0789    | 21-0790    | 21-0791    | 21-0792    |
| Price excl. VAT |            |            |            |            |            |            |            |

|                      |                                       |  |                      |                           |                              |                          |                         |
|----------------------|---------------------------------------|--|----------------------|---------------------------|------------------------------|--------------------------|-------------------------|
| Standard accessories |                                       |  | Optional accessories |                           |                              |                          |                         |
|                      | 1 set hard inside solid jaws DIJ-DK11 | 1 set hard outside solid jaws DOJ-DK11 |                      | Hard master jaws DMJ-DK11 | Reversible top jaws DTJ-DK11 | Soft solid jaws DSJ-DK11 | Soft top jaws DSTJ-DK11 |

Spare parts see page 18-19

Centre mount according to DIN 6350, cast iron

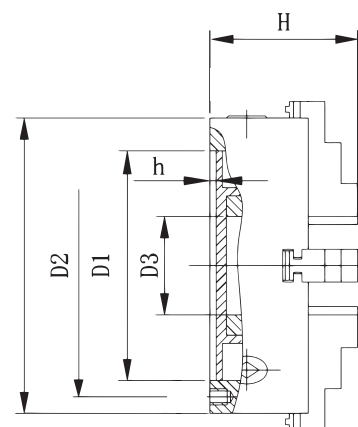


## Execution:

- Standard 4-jaw chuck with high-quality cast iron body
- With centre mount according to DIN 6350
- Inclusive each 1 set hard inside and hard outside solid jaws

## Application:

- Suitable for turning lathes and grinding machines as well as milling devices



| D - chuck size  | 80       | 100      | 125      | 160      | 200      |
|-----------------|----------|----------|----------|----------|----------|
| D1              | 56 mm    | 70 mm    | 95 mm    | 125 mm   | 160 mm   |
| D2              | 67 mm    | 83 mm    | 108 mm   | 140 mm   | 176 mm   |
| D3              | 16 mm    | 22 mm    | 30 mm    | 45 mm    | 65 mm    |
| H               | 66,5 mm  | 74,5 mm  | 84,5 mm  | 94 mm    | 109 mm   |
| H1              | 50 mm    | 55 mm    | 58 mm    | 65 mm    | 75 mm    |
| h               | 4 mm     | 3 mm     | 4 mm     | 5 mm     | 5 mm     |
| Mounting bolts  | 3 x M6   | 3 x M8   | 3 x M8   | 6 x M10  | 6 x M10  |
| Max. speed      | 4000 rpm | 3500 rpm | 3000 rpm | 2500 rpm | 2000 rpm |
| Weight approx.  | 2 kg     | 3,2 kg   | 5,3 kg   | 9 kg     | 16,4 kg  |
| Art. no.        | 21-0800  | 21-0801  | 21-0802  | 21-0803  | 21-0804  |
| Price excl. VAT |          |          |          |          |          |

| D - chuck size  | 250      | 315      | 400      | 500     | 630      |
|-----------------|----------|----------|----------|---------|----------|
| D1              | 200 mm   | 260 mm   | 330 mm   | 420 mm  | 545 mm   |
| D2              | 224 mm   | 286 mm   | 362 mm   | 458 mm  | 586 mm   |
| D3              | 80 mm    | 100 mm   | 130 mm   | 210 mm  | 260 mm   |
| H               | 120 mm   | 156,5 mm | 173,5 mm | 205 mm  | 220,5 mm |
| H1              | 80 mm    | 90 mm    | 100 mm   | 115 mm  | 135 mm   |
| h               | 5 mm     | 6 mm     | 6 mm     | 6 mm    | 7 mm     |
| Mounting bolts  | 6 x M12  | 6 x M16  | 6 x M16  | 6 x M16 | 6 x M16  |
| Max. speed      | 1600 rpm | 1200 rpm | 1000 rpm | 800 rpm | 800 rpm  |
| Weight approx.  | 28,7 kg  | 49 kg    | 80 kg    | 142 kg  | 240 kg   |
| Art. no.        | 21-0805  | 21-0806  | 21-0807  | 21-0808 | 21-0809  |
| Price excl. VAT |          |          |          |         |          |

|                      |                                       |  |                      |                           |                              |                          |                         |
|----------------------|---------------------------------------|--|----------------------|---------------------------|------------------------------|--------------------------|-------------------------|
| Standard accessories |                                       |  | Optional accessories |                           |                              |                          |                         |
|                      | 1 set hard inside solid jaws DJU-DK11 | 1 set hard outside solid jaws DOJ-DK11 |                      | Hard master jaws DMJ-DK11 | Reversible top jaws DTJ-DK11 | Soft solid jaws DSJ-DK11 | Soft top jaws DSTJ-DK11 |

Spare parts see page 18-19

According to DIN 55029, cast iron

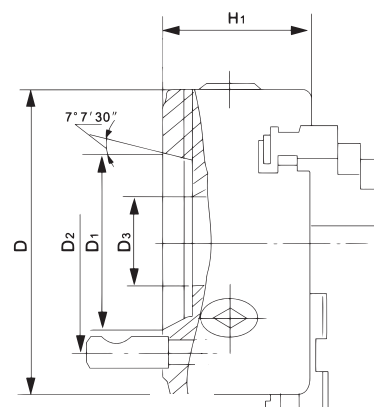


## Execution:

- Standard 4-jaw chuck with high-quality cast iron body
- With Camlock direct mount according to DIN 55029
- Inclusive each 1 set hard inside and hard outside solid jaws

## Application:

- Suitable for conventional turning lathes



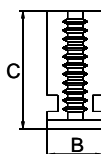
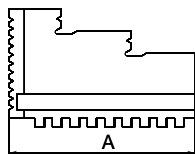
| Chuck size      | 125/D3    | 125/D4    | 160/D4    | 160/D5    | 200/D4    | 200/D5    | 200/D6     |
|-----------------|-----------|-----------|-----------|-----------|-----------|-----------|------------|
| D - diameter    | 125 mm    | 125 mm    | 160 mm    | 160 mm    | 200 mm    | 200 mm    | 200 mm     |
| Taper           | 3         | 4         | 4         | 5         | 4         | 5         | 6          |
| D1 (max.)       | 53,988 mm | 63,526 mm | 63,526 mm | 82,578 mm | 63,526 mm | 82,578 mm | 106,390 mm |
| D2              | 70,6 mm   | 82,6 mm   | 82,6 mm   | 104,8 mm  | 82,6 mm   | 104,8 mm  | 133,4 mm   |
| D3              | 30 mm     | 30 mm     | 40 mm     | 40 mm     | 60 mm     | 60 mm     | 60 mm      |
| H1              | 63 mm     | 63 mm     | 74 mm     | 74 mm     | 90 mm     | 90 mm     | 90 mm      |
| Max. speed      | 3000 rpm  | 3000 rpm  | 2500 rpm  | 2500 rpm  | 2000 rpm  | 2000 rpm  | 2000 rpm   |
| Weight approx.  | 5 kg      | 5 kg      | 9 kg      | 9 kg      | 19 kg     | 19 kg     | 19 kg      |
| Art. no.        | 21-0830   | 21-0831   | 21-0832   | 21-0833   | 21-0833F  | 21-0834   | 21-0835    |
| Price excl. VAT |           |           |           |           |           |           |            |

| Chuck size      | 250/D6     | 250/D8     | 315/D6     | 315/D8     | 315/D11    | 400/D6     | 400/D8     | 400/D11    |
|-----------------|------------|------------|------------|------------|------------|------------|------------|------------|
| D - diameter    | 250 mm     | 250 mm     | 315 mm     | 315 mm     | 315 mm     | 400 mm     | 400 mm     | 400 mm     |
| Taper           | 6          | 8          | 6          | 8          | 11         | 6          | 8          | 11         |
| D1 (max.)       | 106,390 mm | 139,734 mm | 106,390 mm | 139,734 mm | 196,887 mm | 106,390 mm | 139,734 mm | 196,887 mm |
| D2              | 133,4 mm   | 171,4 mm   | 133,4 mm   | 171,4 mm   | 235 mm     | 133,4 mm   | 171,4 mm   | 235 mm     |
| D3              | 70 mm      | 80 mm      | 100 mm     | 100 mm     | 100 mm     | 103 mm     | 130 mm     | 130 mm     |
| H1              | 96,5 mm    | 96,5 mm    | 113 mm     | 113 mm     | 115 mm     | 126 mm     | 126 mm     | 126 mm     |
| Max. speed      | 1600 rpm   | 1600 rpm   | 1200 rpm   | 1200 rpm   | 1200 rpm   | 1000 rpm   | 1000 rpm   | 1000 rpm   |
| Weight approx.  | 32 kg      | 32 kg      | 51 kg      | 51 kg      | 51 kg      | 101 kg     | 101 kg     | 101 kg     |
| Art. no.        | 21-0836    | 21-0837    | 21-0838    | 21-0839    | 21-0840    | 21-0841    | 21-0842    | 21-0843    |
| Price excl. VAT |            |            |            |            |            |            |            |            |

|                      |                                       |  |                      |                           |                              |                          |                         |
|----------------------|---------------------------------------|--|----------------------|---------------------------|------------------------------|--------------------------|-------------------------|
| Standard accessories |                                       |  | Optional accessories |                           |                              |                          |                         |
|                      | 1 set hard inside solid jaws DIJ-DK11 | 1 set hard outside solid jaws DOJ-DK11 |                      | Hard master jaws DMJ-DK11 | Reversible top jaws DTJ-DK11 | Soft solid jaws DSJ-DK11 | Soft top jaws DSTJ-DK11 |

Spare parts see page 18-19

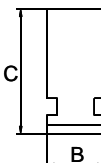
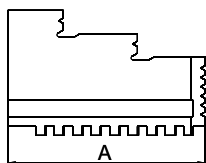
## Hard outside solid jaws DOJ-DK11 and DOJ-DK12



| Art. no. | Description                       | A   | B    | C  | excl. VAT |
|----------|-----------------------------------|-----|------|----|-----------|
| mm       |                                   |     |      |    |           |
| 21-0942  | Hard out. solid jaws DOJ-DK11-80  | 32  | 12   | 33 | €         |
| 21-0943  | Hard out. solid jaws DOJ-DK11-100 | 42  | 15   | 38 | €         |
| 21-0944  | Hard out. solid jaws DOJ-DK11-125 | 56  | 16   | 45 | €         |
| 21-0945  | Hard out. solid jaws DOJ-DK11-160 | 70  | 18,5 | 53 | €         |
| 21-0946  | Hard out. solid jaws DOJ-DK11-200 | 85  | 22   | 61 | €         |
| 21-0947  | Hard out. solid jaws DOJ-DK11-250 | 105 | 27   | 69 | €         |
| 21-0948  | Hard out. solid jaws DOJ-DK11-315 | 130 | 36   | 91 | €         |
| 21-0949  | Hard out. solid jaws DOJ-DK11-400 | 138 | 36   | 91 | €         |

| Art. no. | Description                       | A   | B    | C   | excl. VAT |
|----------|-----------------------------------|-----|------|-----|-----------|
| mm       |                                   |     |      |     |           |
| 21-0950  | Hard out. solid jaws DOJ-DK12-500 | 180 | 46   | 100 | €         |
| 21-0951  | Hard out. solid jaws DOJ-DK12-630 | 225 | 50   | 117 | €         |
| 21-0955  | Hard out. solid jaws DOJ-DK12-80  | 32  | 12   | 33  | €         |
| 21-0956  | Hard out. solid jaws DOJ-DK12-100 | 42  | 15   | 38  | €         |
| 21-0957  | Hard out. solid jaws DOJ-DK12-125 | 56  | 16   | 45  | €         |
| 21-0958  | Hard out. solid jaws DOJ-DK12-160 | 70  | 18,5 | 53  | €         |
| 21-0959  | Hard out. solid jaws DOJ-DK12-200 | 85  | 22   | 61  | €         |
| 21-0960  | Hard out. solid jaws DOJ-DK12-250 | 105 | 27   | 69  | €         |
| 21-0961  | Hard out. solid jaws DOJ-DK12-315 | 130 | 36   | 91  | €         |
| 21-0962  | Hard out. solid jaws DOJ-DK12-400 | 138 | 36   | 91  | €         |
| 21-0963  | Hard out. solid jaws DOJ-DK12-500 | 180 | 46   | 100 | €         |
| 21-0964  | Hard out. solid jaws DOJ-DK12-630 | 225 | 50   | 117 | €         |

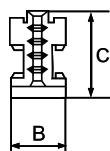
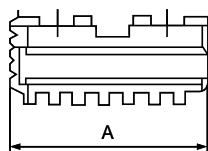
## Hard inside solid jaws DIJ-DK11 and DIJ-DK12



|         |                                     |     |      |    |   |
|---------|-------------------------------------|-----|------|----|---|
| 21-0968 | Hard inside solid jaws DIJ-DK11-80  | 32  | 12   | 33 | € |
| 21-0969 | Hard inside solid jaws DIJ-DK11-100 | 42  | 15   | 38 | € |
| 21-0970 | Hard inside solid jaws DIJ-DK11-125 | 56  | 16   | 45 | € |
| 21-0971 | Hard inside solid jaws DIJ-DK11-160 | 70  | 18,5 | 53 | € |
| 21-0972 | Hard inside solid jaws DIJ-DK11-200 | 85  | 22   | 61 | € |
| 21-0973 | Hard inside solid jaws DIJ-DK11-250 | 105 | 27   | 69 | € |
| 21-0974 | Hard inside solid jaws DIJ-DK11-315 | 130 | 36   | 91 | € |

|         |                                     |     |      |     |   |
|---------|-------------------------------------|-----|------|-----|---|
| 21-0975 | Hard inside solid jaws DIJ-DK12-400 | 138 | 36   | 91  | € |
| 21-0976 | Hard inside solid jaws DIJ-DK12-500 | 180 | 46   | 100 | € |
| 21-0977 | Hard inside solid jaws DIJ-DK12-630 | 225 | 50   | 117 | € |
| 21-0981 | Hard inside solid jaws DIJ-DK12-80  | 32  | 12   | 33  | € |
| 21-0982 | Hard inside solid jaws DIJ-DK12-100 | 42  | 15   | 38  | € |
| 21-0983 | Hard inside solid jaws DIJ-DK12-125 | 56  | 16   | 45  | € |
| 21-0984 | Hard inside solid jaws DIJ-DK12-160 | 70  | 18,5 | 53  | € |
| 21-0985 | Hard inside solid jaws DIJ-DK12-200 | 85  | 22   | 61  | € |
| 21-0986 | Hard inside solid jaws DIJ-DK12-250 | 105 | 27   | 69  | € |
| 21-0987 | Hard inside solid jaws DIJ-DK12-315 | 130 | 36   | 91  | € |
| 21-0988 | Hard inside solid jaws DIJ-DK12-400 | 138 | 36   | 91  | € |
| 21-0989 | Hard inside solid jaws DIJ-DK12-500 | 180 | 46   | 100 | € |
| 21-0990 | Hard inside solid jaws DIJ-DK12-630 | 225 | 50   | 117 | € |

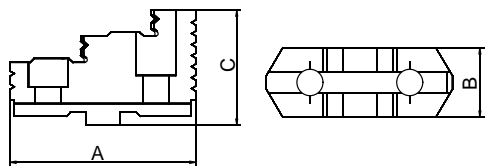
## Hard master jaws DMJ-DK11 and DMJ-DK12



|         |                               |     |    |      |   |
|---------|-------------------------------|-----|----|------|---|
| 21-0898 | Hard master jaws DMJ-DK11-125 | 51  | 16 | 26,5 | € |
| 21-0899 | Hard master jaws DMJ-DK11-160 | 64  | 20 | 33   | € |
| 21-0900 | Hard master jaws DMJ-DK11-200 | 80  | 22 | 35   | € |
| 21-0901 | Hard master jaws DMJ-DK11-250 | 98  | 27 | 38   | € |
| 21-0902 | Hard master jaws DMJ-DK11-315 | 118 | 36 | 43   | € |
| 21-0903 | Hard master jaws DMJ-DK11-400 | 114 | 36 | 46   | € |

|         |                               |     |    |      |   |
|---------|-------------------------------|-----|----|------|---|
| 21-0904 | Hard master jaws DMJ-DK12-500 | 152 | 45 | 55   | € |
| 21-0905 | Hard master jaws DMJ-DK12-630 | 210 | 50 | 57   | € |
| 21-0909 | Hard master jaws DMJ-DK12-125 | 51  | 16 | 26,5 | € |
| 21-0910 | Hard master jaws DMJ-DK12-160 | 64  | 20 | 33   | € |
| 21-0911 | Hard master jaws DMJ-DK12-200 | 80  | 22 | 35   | € |
| 21-0912 | Hard master jaws DMJ-DK12-250 | 98  | 27 | 38   | € |
| 21-0913 | Hard master jaws DMJ-DK12-315 | 118 | 36 | 43   | € |
| 21-0914 | Hard master jaws DMJ-DK12-400 | 114 | 36 | 46   | € |
| 21-0915 | Hard master jaws DMJ-DK12-500 | 152 | 45 | 55   | € |
| 21-0916 | Hard master jaws DMJ-DK12-630 | 210 | 50 | 57   | € |

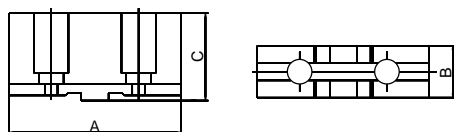
## Reversible top jaws DTJ-DK11 and DTJ-DK12



| Art. no. | Description                      | A    | B  | C    | excl. VAT |
|----------|----------------------------------|------|----|------|-----------|
|          |                                  | mm   |    |      |           |
| 21-0926  | Reversible top jaws DTJ-DK11-500 | 132  | 45 | 82   | €         |
| 21-0927  | Reversible top jaws DTJ-DK11-630 | 131  | 52 | 87   | €         |
| 21-0931  | Reversible top jaws DTJ-DK12-125 | 53,5 | 20 | 38,3 | €         |
| 21-0932  | Reversible top jaws DTJ-DK12-160 | 67   | 25 | 41   | €         |
| 21-0933  | Reversible top jaws DTJ-DK12-200 | 80   | 30 | 45   | €         |
| 21-0934  | Reversible top jaws DTJ-DK12-250 | 95   | 36 | 53   | €         |
| 21-0935  | Reversible top jaws DTJ-DK12-315 | 118  | 42 | 61   | €         |
| 21-0936  | Reversible top jaws DTJ-DK12-400 | 130  | 45 | 70   | €         |
| 21-0937  | Reversible top jaws DTJ-DK12-500 | 132  | 45 | 82   | €         |
| 21-0938  | Reversible top jaws DTJ-DK12-630 | 131  | 52 | 87   | €         |

| Art. no. | Description                      | A    | B  | C    | excl. VAT |
|----------|----------------------------------|------|----|------|-----------|
|          |                                  | mm   |    |      |           |
| 21-0920  | Reversible top jaws DTJ-DK11-125 | 53,5 | 20 | 38,3 | €         |
| 21-0921  | Reversible top jaws DTJ-DK11-160 | 67   | 25 | 41   | €         |
| 21-0922  | Reversible top jaws DTJ-DK11-200 | 80   | 30 | 45   | €         |
| 21-0923  | Reversible top jaws DTJ-DK11-250 | 95   | 36 | 53   | €         |
| 21-0924  | Reversible top jaws DTJ-DK11-315 | 118  | 42 | 61   | €         |
| 21-0925  | Reversible top jaws DTJ-DK11-400 | 130  | 45 | 70   | €         |

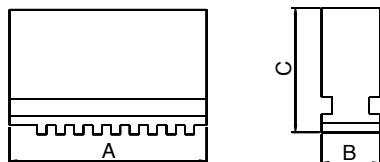
## Soft top jaws DSTJ-DK11 and DSTJ-DK12



|         |                             |     |      |      |   |
|---------|-----------------------------|-----|------|------|---|
| 21-0882 | Soft top jaws DSTJ-DK11-500 | 140 | 42   | 74,5 | € |
| 21-0883 | Soft top jaws DSTJ-DK11-630 | 160 | 52   | 82   | € |
| 21-0887 | Soft top jaws DSTJ-DK12-125 | 64  | 22   | 38,5 | € |
| 21-0888 | Soft top jaws DSTJ-DK12-160 | 78  | 25   | 41,5 | € |
| 21-0889 | Soft top jaws DSTJ-DK12-200 | 90  | 27   | 45   | € |
| 21-0890 | Soft top jaws DSTJ-DK12-250 | 106 | 32,5 | 51,5 | € |
| 21-0891 | Soft top jaws DSTJ-DK12-315 | 120 | 37   | 55   | € |
| 21-0892 | Soft top jaws DSTJ-DK12-400 | 140 | 42   | 64,5 | € |
| 21-0893 | Soft top jaws DSTJ-DK12-500 | 140 | 42   | 74,5 | € |
| 21-0894 | Soft top jaws DSTJ-DK12-630 | 160 | 52   | 82   | € |

|         |                             |     |      |      |   |
|---------|-----------------------------|-----|------|------|---|
| 21-0876 | Soft top jaws DSTJ-DK11-125 | 64  | 22   | 38,5 | € |
| 21-0877 | Soft top jaws DSTJ-DK11-160 | 78  | 25   | 41,5 | € |
| 21-0878 | Soft top jaws DSTJ-DK11-200 | 90  | 27   | 43,5 | € |
| 21-0879 | Soft top jaws DSTJ-DK11-250 | 106 | 32,5 | 51,5 | € |
| 21-0880 | Soft top jaws DSTJ-DK11-315 | 120 | 37   | 55   | € |
| 21-0881 | Soft top jaws DSTJ-DK11-400 | 140 | 42   | 64,5 | € |

## Soft solid jaws DSJ-DK11 and DSJ-DK12



|         |                              |     |      |     |   |
|---------|------------------------------|-----|------|-----|---|
| 21-0857 | Soft solid jaws DSJ-DK11-400 | 145 | 36   | 92  | € |
| 21-0858 | Soft solid jaws DSJ-DK11-500 | 180 | 46   | 100 | € |
| 21-0859 | Soft solid jaws DSJ-DK11-630 | 225 | 50   | 117 | € |
| 21-0863 | Soft solid jaws DSJ-DK12-80  | 32  | 12   | 29  | € |
| 21-0864 | Soft solid jaws DSJ-DK12-100 | 44  | 15   | 38  | € |
| 21-0865 | Soft solid jaws DSJ-DK12-125 | 56  | 16   | 45  | € |
| 21-0866 | Soft solid jaws DSJ-DK12-160 | 70  | 18,5 | 53  | € |
| 21-0867 | Soft solid jaws DSJ-DK12-200 | 85  | 22   | 57  | € |
| 21-0868 | Soft solid jaws DSJ-DK12-250 | 105 | 27   | 61  | € |
| 21-0869 | Soft solid jaws DSJ-DK12-315 | 125 | 36   | 73  | € |
| 21-0870 | Soft solid jaws DSJ-DK12-400 | 145 | 36   | 92  | € |
| 21-0871 | Soft solid jaws DSJ-DK12-500 | 180 | 46   | 100 | € |
| 21-0872 | Soft solid jaws DSJ-DK12-630 | 225 | 50   | 117 | € |

|         |                              |     |      |    |   |
|---------|------------------------------|-----|------|----|---|
| 21-0850 | Soft solid jaws DSJ-DK11-80  | 32  | 12   | 29 | € |
| 21-0851 | Soft solid jaws DSJ-DK11-100 | 44  | 15   | 38 | € |
| 21-0852 | Soft solid jaws DSJ-DK11-125 | 56  | 16   | 45 | € |
| 21-0853 | Soft solid jaws DSJ-DK11-160 | 70  | 18,5 | 53 | € |
| 21-0854 | Soft solid jaws DSJ-DK11-200 | 85  | 22   | 57 | € |
| 21-0855 | Soft solid jaws DSJ-DK11-250 | 105 | 27   | 61 | € |
| 21-0856 | Soft solid jaws DSJ-DK11-315 | 125 | 36   | 73 | € |

Centre mount according to DIN 6350, cast iron

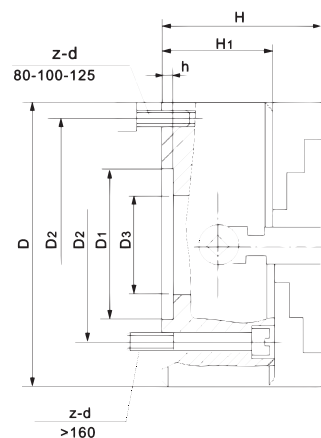


## Execution:

- 4-jaw independent chuck made out of cast iron
- With centre mount according to DIN 6350
- Four separate adjustable jaws
- From a diameter of 160 mm the independent chuck is with front-mounting
- Including milled T-slots from a diameter of 300 mm
- Inclusive one set hard outside solid jaws

## Application:

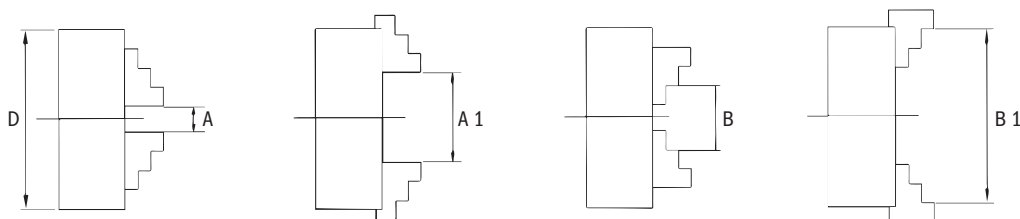
- Useable for clamping of asymmetric and rectangular shaped workpieces on turning lathes



| D - chuck size  | 80       | 100      | 125      | 160      | 200      | 250      | 320     |
|-----------------|----------|----------|----------|----------|----------|----------|---------|
| D1              | 55 mm    | 72 mm    | 95 mm    | 65 mm    | 125 mm   | 100 mm   | 140 mm  |
| D2              | 66 mm    | 84 mm    | 108 mm   | 95 mm    | 104,8 mm | 120 mm   | 165 mm  |
| D3              | 22 mm    | 25 mm    | 30 mm    | 45 mm    | 50 mm    | 65 mm    | 95 mm   |
| H               | 58 mm    | 77 mm    | 78 mm    | 96,5 mm  | 110 mm   | 117,5 mm | 134 mm  |
| H1              | 42 mm    | 54 mm    | 56 mm    | 65 mm    | 75 mm    | 82 mm    | 90 mm   |
| h               | 3,5 mm   | 4 mm     | 4,5 mm   | 5 mm     | 6 mm     | 6 mm     | 6 mm    |
| Mounting bolts  | 4 x M6   | 4 x M8   | 4 x M8   | 4 x M10  | 4 x M10  | 4 x M12  | 4 x M16 |
| Max. speed      | 2400 rpm | 2400 rpm | 2000 rpm | 1600 rpm | 1440 rpm | 1200 rpm | 960 rpm |
| Weight approx.  | 1,55 kg  | 3,15 kg  | 4,90 kg  | 7,70 kg  | 15 kg    | 22 kg    | 38 kg   |
| Art. no.        | 21-5000  | 21-5001  | 21-5002  | 21-5003  | 21-5004  | 21-5005  | 21-5007 |
| Price excl. VAT |          |          |          |          |          |          |         |

| D - chuck size  | 400     | 500     | 630     | 800     | 1000    | 1250    |
|-----------------|---------|---------|---------|---------|---------|---------|
| D1              | 160 mm  | 200 mm  | 220 mm  | 250 mm  | 320 mm  | 400 mm  |
| D2              | 185 mm  | 236 mm  | 258 mm  | 300 mm  | 370 mm  | 500 mm  |
| D3              | 125 mm  | 160 mm  | 180 mm  | 210 mm  | 260 mm  | 305 mm  |
| H               | 143 mm  | 161 mm  | 180 mm  | 210 mm  | 241 mm  | 256 mm  |
| H1              | 95 mm   | 106 mm  | 115 mm  | 135 mm  | 150 mm  | 165 mm  |
| h               | 8 mm    | 8 mm    | 10 mm   | 12 mm   | 15 mm   | 15 mm   |
| Mounting bolts  | 4 x M16 | 4 x M20 | 4 x M20 | 8 x M20 | 8 x M20 | 8 x M20 |
| Max. speed      | 640 rpm | 400 rpm | 320 rpm | 240 rpm | 180 rpm | 180 rpm |
| Weight approx.  | 62 kg   | 90 kg   | 148 kg  | 267 kg  | 500 kg  | 800 kg  |
| Art. no.        | 21-5008 | 21-5009 | 21-5010 | 21-5011 | 21-5012 | 21-5013 |
| Price excl. VAT |         |         |         |         |         |         |

## Clamping range for independent chuck K72





According to DIN 55029, cast iron

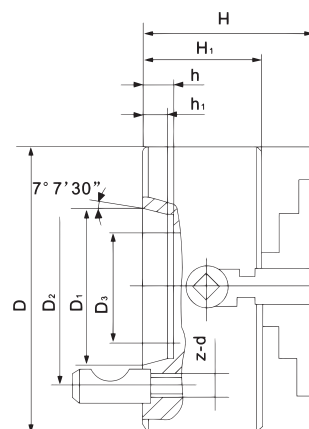


## Execution

- 4-jaw independent chuck made out of cast iron
- With Camlock- direct mount according to DIN 55029
- Four separate adjustable jaws
- Including milled T-slots from a diameter of 300 mm
- Inclusive one set hard outside solid jaws

## Application:

- Useable for clamping of asymmetric and rectangular shaped workpieces on turning lathes



| Chuck size      | 160/D4   | 200/D4   | 200/D5   | 250/D5   | 250/D6    | 320/D5   | 320/D6    | 320/D8    | 400/D6    | 400/D8    |
|-----------------|----------|----------|----------|----------|-----------|----------|-----------|-----------|-----------|-----------|
| D - diameter    | 160 mm   | 200 mm   | 200 mm   | 250 mm   | 250 mm    | 320 mm   | 320 mm    | 320 mm    | 400 mm    | 400 mm    |
| Taper           | 4        | 4        | 5        | 5        | 6         | 5        | 6         | 8         | 6         | 8         |
| D1 (max.)       | 63,51 mm | 63,51 mm | 82,56 mm | 82,56 mm | 106,37 mm | 82,56 mm | 106,37 mm | 139,72 mm | 106,37 mm | 139,72 mm |
| D2              | 82,6 mm  | 82,6 mm  | 104,8 mm | 104,8 mm | 133,4 mm  | 104,8 mm | 133,4 mm  | 171,4 mm  | 133,4 mm  | 171,4 mm  |
| D3              | 56 mm    | 56 mm    | 56 mm    | 56 mm    | 75 mm     | 56 mm    | 75 mm     | 95 mm     | 75 mm     | 125 mm    |
| H1              | 65 mm    | 75 mm    | 75 mm    | 80 mm    | 80 mm     | 90 mm    | 90 mm     | 90 mm     | 95 mm     | 95 mm     |
| Max. speed      | 1600 rpm | 1440 rpm | 1440 rpm | 1200 rpm | 1200 rpm  | 960 rpm  | 960 rpm   | 400 rpm   | 640 rpm   | 640 rpm   |
| Weight approx.  | 15,7 kg  | 15 kg    | 17 kg    | 26 kg    | 26 kg     | 36 kg    | 40 kg     | 38 kg     | 61,2 kg   | 70 kg     |
| Art. no.        | 21-5058  | 21-5059  | 21-5060  | 21-5062  | 21-5063   | 21-5064  | 21-5065   | 21-5066   | 21-5069   | 21-5070   |
| Price excl. VAT |          |          |          |          |           |          |           |           |           |           |

| Chuck size      | 400/D11   | 500/D8    | 500/D11   | 630/D11   | 630/D15   | 800/D11   | 800/D15   | 1000/D11  | 1000/D15  | 1250/D15  |
|-----------------|-----------|-----------|-----------|-----------|-----------|-----------|-----------|-----------|-----------|-----------|
| D - diameter    | 400 mm    | 500 mm    | 500 mm    | 630 mm    | 630 mm    | 800 mm    | 800 mm    | 1000 mm   | 1000 mm   | 1250 mm   |
| Taper           | 11        | 8         | 11        | 11        | 15        | 11        | 15        | 11        | 15        | 15        |
| D1 (max.)       | 196,87 mm | 139,72 mm | 196,87 mm | 196,87 mm | 285,77 mm | 196,87 mm | 285,77 mm | 196,87 mm | 285,77 mm | 285,77 mm |
| D2              | 235 mm    | 171,4 mm  | 235 mm    | 235 mm    | 330,2 mm  | 235 mm    | 330,2 mm  | 235 mm    | 330,2 mm  | 330,2 mm  |
| D3              | 160 mm    | 125 mm    | 160 mm    | 180 mm    | 180 mm    | 180 mm    | 180 mm    | 180 mm    | 280 mm    | 280 mm    |
| H1              | 95 mm     | 106 mm    | 106 mm    | 115 mm    | 115 mm    | 135 mm    | 135 mm    | 150 mm    | 150 mm    | 165 mm    |
| Max. speed      | 640 rpm   | 400 rpm   | 400 rpm   | 320 rpm   | 180 rpm   | 240 rpm   | 240 rpm   | 180 rpm   | 180 rpm   | 180 rpm   |
| Weight approx.  | 70 kg     | 95 kg     | 94,4 kg   | 169 kg    | 174 kg    | 243 kg    | 257 kg    | 582 kg    | 608 kg    | 835 kg    |
| Art. no.        | 21-5071   | 21-5072   | 21-5073   | 21-5074   | 21-5075   | 21-5076   | 21-5077   | 21-5078   | 21-5079   | 21-5080   |
| Price excl. VAT |           |           |           |           |           |           |           |           |           |           |

## Clamping range for independent chuck K72

| D - Futtergröße | 80    | 100    | 125    | 160    | 200    | 250    | 300     | 320     | 400     | 500     | 630     | 800     | 1000     |
|-----------------|-------|--------|--------|--------|--------|--------|---------|---------|---------|---------|---------|---------|----------|
| A-A1            | 5-35  | 6-45   | 7-57   | 8-80   | 10-100 | 15-130 | 20-156  | 20-176  | 25-250  | 35-300  | 50-400  | 70-540  | 100-680  |
| B-B1            | 35-80 | 40-100 | 48-125 | 50-160 | 63-200 | 80-250 | 100-300 | 100-320 | 118-400 | 125-500 | 160-630 | 200-800 | 250-1000 |

\* The mentioned clamping ranges are for independent chucks with reversible jaws

Short taper according to DIN 55029, rough on chuck side

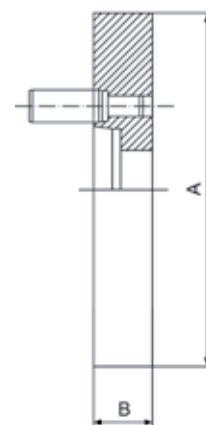


## Execution:

- Flange out of cast iron
- With Camlock-direct mount according to DIN 55029
- Fully machined on machine side
- Rough on chuck side

## Application:

- For mounting of self-centering chucks and independent chucks with centre mount



| Flange size     | 125/D3  | 125/D4  | 160/D4  | 160/D5  | 200/D4  | 200/D5  | 200/D6  | 250/D6  | 250/D8   | 315/D6  |
|-----------------|---------|---------|---------|---------|---------|---------|---------|---------|----------|---------|
| Diameter        | 125 mm  | 125 mm  | 160 mm  | 160 mm  | 200 mm  | 200 mm  | 200 mm  | 250 mm  | 250 mm   | 315 mm  |
| Taper           | 3       | 4       | 4       | 5       | 4       | 5       | 6       | 6       | 8        | 6       |
| A               | 127 mm  | 127 mm  | 162 mm  | 162 mm  | 203 mm  | 203 mm  | 203 mm  | 253 mm  | 253 mm   | 318 mm  |
| B               | 28 mm   | 28 mm   | 29 mm   | 32 mm   | 29 mm   | 32 mm   | 39 mm   | 39 mm   | 42 mm    | 42 mm   |
| Passage         | 51,5 mm | 61 mm   | 61 mm   | 79,5 mm | 61 mm   | 79,5 mm | 103 mm  | 103 mm  | 136,2 mm | 103 mm  |
| Art. no.        | 21-4051 | 21-4052 | 21-4053 | 21-4054 | 21-4055 | 21-4056 | 21-4057 | 21-4058 | 21-4059  | 21-4060 |
| Price excl. VAT |         |         |         |         |         |         |         |         |          |         |

| Flange size     | 315/D8   | 315/D11  | 400/D8   | 400/D11  | 500/D8   | 500/D11  | 500/D15  | 630/D8   | 630/D11  | 630/D15  |
|-----------------|----------|----------|----------|----------|----------|----------|----------|----------|----------|----------|
| Diameter        | 315 mm   | 315 mm   | 400 mm   | 400 mm   | 500 mm   | 500 mm   | 500 mm   | 630 mm   | 630 mm   | 630 mm   |
| Taper           | 8        | 11       | 8        | 11       | 8        | 11       | 15       | 8        | 11       | 15       |
| A               | 318 mm   | 318 mm   | 405 mm   | 405 mm   | 505 mm   | 505 mm   | 505 mm   | 635 mm   | 635 mm   | 635 mm   |
| B               | 45 mm    | 52 mm    | 45 mm    | 49 mm    | 42 mm    | 49 mm    | 50 mm    | 42 mm    | 49 mm    | 50 mm    |
| Passage         | 136,2 mm | 192,8 mm | 136,2 mm | 192,8 mm | 136,2 mm | 192,8 mm | 281,5 mm | 136,2 mm | 192,8 mm | 281,5 mm |
| Art. no.        | 21-4061  | 21-4062  | 21-4063  | 21-4064  | 21-4065  | 21-4066  | 21-4067  | 21-4068  | 21-4069  | 21-4070  |
| Price excl. VAT |          |          |          |          |          |          |          |          |          |          |

Examples of our wide range of accessories



Short taper according to DIN 55029, chuck side pre-machined and drilled

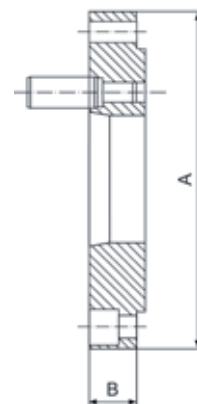


## Execution:

- Flange out of cast iron
- With Camlock-direct mount according to DIN 55029
- Fully machined on machine side
- Chuck side pre-machined and drilled

## Application:

- For mounting of self-centering chucks and independent chucks with centre mount



| Flange size     | 125/D3  | 125/D4  | 160/D4  | 160/D5  | 200/D4  | 200/D5  | 200/D6  | 250/D6  | 250/D8   | 315/D6  |
|-----------------|---------|---------|---------|---------|---------|---------|---------|---------|----------|---------|
| Diameter        | 125 mm  | 125 mm  | 160 mm  | 160 mm  | 200 mm  | 200 mm  | 200 mm  | 250 mm  | 250 mm   | 315 mm  |
| Taper           | 3       | 4       | 4       | 5       | 4       | 5       | 6       | 6       | 8        | 6       |
| A               | 125 mm  | 125 mm  | 160 mm  | 160 mm  | 200 mm  | 200 mm  | 200 mm  | 250 mm  | 250 mm   | 315 mm  |
| B               | 26 mm   | 26 mm   | 27 mm   | 30 mm   | 27 mm   | 30 mm   | 36,5 mm | 36,5 mm | 39 mm    | 39,5 mm |
| Passage         | 51,5 mm | 61 mm   | 61 mm   | 79,5 mm | 61 mm   | 79,5 mm | 103 mm  | 103 mm  | 136,2 mm | 103 mm  |
| Art. no.        | 21-4101 | 21-4102 | 21-4103 | 21-4104 | 21-4105 | 21-4106 | 21-4107 | 21-4108 | 21-4109  | 21-4110 |
| Price excl. VAT |         |         |         |         |         |         |         |         |          |         |

| Flange size     | 315/D8   | 315/D11  | 400/D8   | 400/D11  | 500/D8   | 500/D11  | 500/D15  | 630/D8   | 630/D11  | 630/D15  |
|-----------------|----------|----------|----------|----------|----------|----------|----------|----------|----------|----------|
| Diameter        | 315 mm   | 315 mm   | 400 mm   | 400 mm   | 500 mm   | 500 mm   | 500 mm   | 630 mm   | 630 mm   | 630 mm   |
| Taper           | 8        | 11       | 8        | 11       | 8        | 11       | 15       | 8        | 11       | 15       |
| A               | 315 mm   | 315 mm   | 400 mm   | 400 mm   | 500 mm   | 500 mm   | 500 mm   | 630 mm   | 630 mm   | 630 mm   |
| B               | 42 mm    | 52 mm    | 39 mm    | 47 mm    | 39 mm    | 47 mm    | 50 mm    | 39 mm    | 47 mm    | 50 mm    |
| Passage         | 136,2 mm | 192,8 mm | 136,2 mm | 192,8 mm | 136,2 mm | 192,8 mm | 281,5 mm | 136,2 mm | 192,8 mm | 281,5 mm |
| Art. no.        | 21-4111  | 21-4112  | 21-4113  | 21-4114  | 21-4115  | 21-4116  | 21-4117  | 21-4118  | 21-4119  | 21-4120  |
| Price excl. VAT |          |          |          |          |          |          |          |          |          |          |

## Examples of our wide range of accessories





**PWA Handelsges.m.b.H.**  
4020 Linz | Nebingerstraße 7a | Austria  
Telefon: +43.732.66 40 15 | Fax: +43.732.66 40 15-9  
E-mail: [bernardo@pwa.at](mailto:bernardo@pwa.at) | [www.bernardo.at](http://www.bernardo.at)

**Imprint:**

All rights reserved – reproduction of images or texts or parts of these is strictly prohibited unless prior arrangements are made.

Subject to technical and optical amendments. Product specifications subject to change without notice.

Not responsible for printing errors or mistakes.